

Architecture and Landscape Committee

Home Improvement & Landscaping Regulations

The Architecture and Landscape Committee (hereinafter referred to as “ALC” or “the committee”) has prepared landscape and architectural criteria designed to assist homeowners in understanding the requirements of the ALC in making changes that affect the external appearance of the home and landscape.

All proposed works that change or affect the external appearance of the home must be approved by the ALC **before** any work is done. Failure to follow this requirement may result in fines or other remedies including the possible need to remove construction works that have not been approved.

INDEX

<u>Description</u>	<u>Page</u>
▪ Additions to Homes	3
▪ Application Fees	4
▪ Bat Houses	4
▪ Buffer Zone Trimming	5
▪ Common Area	5
○ Neighborhood	5
○ Community	5
▪ Dog Runs	5
▪ Driveway and Walkways	6
○ Concrete	6
○ Sidewalks	6
○ Edge Curbing	6
○ Paver Brick Design	7
○ Whitebridge Court Paver Brick Installation	8
▪ External Lighting	8
○ Exterior Garage/Coach Lights	8
○ Landscape Lighting	9
○ Security Lighting	9
○ Solar Landscape Lighting	9
○ Strobe Lights/Burglar or Fire Alarm Exterior Light	9
○ Gas Yard Light	9
▪ Fencing	9
○ Dog Run Fencing	10
○ Invisible Fencing	10
▪ Flags	10
▪ Foundation Plantings	11
▪ Front Doors and Entries	11
▪ Fruit Trees – Installation and Maintenance	12
▪ Garages & Garage Doors – Repainting or Replacing	12
○ Garages	12
○ Painting or Replacing Garage Doors	12
▪ Gas Yard Light	13
▪ Generators – Installation	14
▪ Golf Course or Common Area Vegetation Trimming	14
▪ Gutters and Downspouts – Installation & Color	14
▪ Handicap Ramp	15
▪ Hurricane Shutters & Storm Protection	15
○ Shutters	15
○ When to Leave Shutters in Place or to Remove Shutters	16
○ Wind Screens	17

Approved and adopted on April 21st, 2022 by the Board of Directors in accordance with the Declaration of Covenants, Conditions and Restrictions for University Park. Nothing in this document shall be retroactive and any action taken under the previous guidelines is still applicable.

▪ Invisible Fencing	17
▪ Irrigation	17
▪ Landscaping	17
○ Bedding Material	18
○ Bed Edging – Paver Bricks	18
○ Low-Maintenance Landscaping Along Ponds	19
○ Mulch	19
○ Perimeter Planting – Foundation & Lanai	20
○ Re-landscaping	20
▪ Lighting, External	21
▪ Mailbox Replacement & Repairs	21
▪ Native Vegetation Pruning	21
▪ Painting or Repainting Home Exterior	22
▪ Perimeter Plantings	22
▪ Plants for University Park	22
○ Our Climate	22
○ What to Plant	23
○ Invasive Plants	23
▪ Pool Deck and Pool Cage	23
○ Pool and Cage Installation	23
○ Pool Cage Installation for Two-Story Homes	24
▪ Pond Bank Retention Materials	24
▪ Rain Barrels	26
▪ Remodeling or Rebuilding of a Home	27
▪ Roofs	27
○ Roof Tiles	27
○ Whitebridge Court Roof Tile Replacement	27
▪ Satellite Dish Installation	28
▪ Screening Generators, Pools or A/C Equipment	28
▪ Setbacks and Variances	29
▪ Solar	30
○ Solar Panel Installation	30
○ Solar Film Installation on Windows	31
▪ Statues, Sculptures, Fountains and Art	31
▪ Storm Shutters and Protective Devices	31
▪ Tankless Water Heaters	32
▪ Trees	32
○ Fruit trees	32
○ Street trees	32
• Placement	32
• Pruning	33
• Removal and replacement	33
○ Palm trees	34
▪ Two story homes	34
▪ Variances	34
▪ Walkways and Driveways	34
▪ Windows	34
○ Glass	34
○ Awnings	34
○ Mill Finish Aluminum	35
○ Frame Color	35
○ Hurricane-Rated	35
○ Solar Film	35
○ Exterior Window Shutters	35
▪ Yard Decorations	35
▪ Yard Lights, Gas	36

Approved and adopted on April 21st, 2022 by the Board of Directors in accordance with the Declaration of Covenants, Conditions and Restrictions for University Park. Nothing in this document shall be retroactive and any action taken under the previous guidelines is still applicable.

Architecture and Landscape Committee Home Improvement & Landscaping Regulations

All proposed works that change or affect the external appearance of the home must receive ALC approval **before** any works are carried out.

Failure to follow this requirement may result in fines or other remedies, including the possible need to remove construction works that have not been approved.



Additions to Homes

The following additions and extensions of a structural nature all require approval by the ALC:

- Extensions to the home in the front, side and/or rear yards.
- Bonus room additions over garage or main body of home.
- Two-story extensions or additions.
- Enclosing and/or extending lanai area.
- Adding a pool, deck, and pool cage.

When submitting your application, include the following:

- A site plan or copy of the house survey with dimensioned setbacks showing the proposed new work in relation to the house and property lines. Setback considerations to the property line and to neighbors are an important part of the review process.
- Detailed plans and elevations from your contractor showing the proposed work.
- How contractor will access the property.
- Acknowledgement that any damage to common areas or neighboring property will be repaired at applicant's cost.

If the application is approved, you are asked to notify your neighbors of the work to be done and approximate time to complete the work.

Approved and adopted on April 21st, 2022 by the Board of Directors in accordance with the Declaration of Covenants, Conditions and Restrictions for University Park. Nothing in this document shall be retroactive and any action taken under the previous guidelines is still applicable.

The jobsite needs to be kept clean and free of debris, to the extent possible, during construction. Any external dumpster needs to be emptied on a regular basis.

Impact to, and views from, neighboring properties will be taken into account in the review process.

Application Fees

Each submittal to the ALC must be accompanied by a check in the amount of the appropriate fee, **made payable to UPCA**. If you are unsure of the applicable amount, please contact the committee at alc@upcai-fl.com for information.

- Rebuild a home entirely or substantially (*fee dependent on neighborhood*) \$750 - \$1,200
- Major remodeling or home extensions (*i.e., 2nd story bonus room or adding rooms*) \$300 - \$500
- Structural additions (*extending garage, adding pool, lanai and/or deck changes*) \$150
- Install satellite/antenna/dish; invisible dog fence; coach lights; landscape lighting; geothermal or heat pump installation; external generator; hurricane shutters; solar panels for pool or home; solar film on windows; repaint home and/or accent colors (*doors, shutters, trim etc.*); screen enclose/extend lanai; make hardscape additions (*fountains, statuary, landscape lighting, dog runs, etc.*); bat house; make changes to landscape plan or add pond bank retaining walls or stabilizing treatment; and all other applications \$25

Bat Houses

Florida is home to thirteen (13) species of bats, all of which are insectivores. They can eat up to their weight in mosquitoes and other insects in one night. They are a protected species.

When installing bat houses, they may only be placed in the back yard on a wood or metal pole that is secured in the ground by cement. Do not mount bat houses on a tree or on your residence. The bat house needs to be a minimum of twelve feet (12') above the ground and about twenty feet (20') from trees to discourage predators. Bat houses may be purchased or made by the homeowner and installed at the homeowner's expense. For further information about bat house construction and placement in Florida, refer to <https://edis.ifas.ufl.edu/uw290>.

It may take several months for bats to decide to occupy your bat house. By following the installation instructions carefully, your success in luring bats from your home to the bat house will greatly increase.

Approved and adopted on April 21st, 2022 by the Board of Directors in accordance with the Declaration of Covenants, Conditions and Restrictions for University Park. Nothing in this document shall be retroactive and any action taken under the previous guidelines is still applicable.

Common Area

Neighborhood Common Area

These are natural and/or landscaped areas owned and maintained by your neighborhood which may include the neighborhood entrance, trees, lawns, islands in the street, road, lights, and irrigation. Your neighborhood committee chairperson is responsible for planning the common area budget. The neighborhood committee oversees the care of the common area landscaping. Any changes to these areas must be approved by the ALC and the Board of Directors.

Community Common Area

These are the lands and amenities owned and shared by all the residents of University Park outside the individual neighborhoods. The common areas are maintained by the association. The ALC has no oversight/responsibility over community common areas.

Dog Runs

Dog runs may be used at the rear of the home and, to a lesser extent, to the side of the home subject to meeting proper setback requirements, respecting easements and meeting approved color selection. Fencing up to forty-eight inches (48”) in height will be considered in two materials – PVC (or vinyl) and aluminum in “wrought iron” effect. Wooden fencing is not approved due to maintenance difficulty. Photos of specific fence designs that may be approved can be found under [Fencing](#).

In all cases of fencing requests, applicants are advised that a landscape plan will be required showing screening to the proposed installation. Hedge-form material is to be the dominant landscape material in order to screen the fence from neighboring property. Tree forms and larger shrub material may be required to assist in minimizing the impact the fence may have on surrounding property.

Maintenance of the fence, and of the entire area enclosed by the fence, including sod, landscaping, irrigation, and pet waste is the responsibility of the homeowner. The yard maintenance companies operating in “landscape-maintained” neighborhoods are not responsible for maintaining within these fenced areas and each homeowner must make their own arrangements for upkeep.

Things to keep in mind about dog runs:

- Use a garden hose to spray down areas where they urinate.
- Remove solid waste *promptly*.

Approved and adopted on April 21st, 2022 by the Board of Directors in accordance with the Declaration of Covenants, Conditions and Restrictions for University Park. Nothing in this document shall be retroactive and any action taken under the previous guidelines is still applicable.

- If you have natural grass in your dog run (as opposed to mulch), you are going to get dead brown spots, so you will need to re-seed or re-sod these areas on a regular basis.

Driveways and Walkways

Concrete

University Park neighborhoods vary in the driveway construction material used, predominantly concrete or paver bricks. For those homes that have concrete driveways, the following criteria apply for approval of applications to stain or resurface a concrete driveway:

- **Plain Concrete:** The pre-approved stain is H & C’s “Bombay” (HF-16 stain). All other color selections will be reviewed on a case-by-case basis. Each submission must be accompanied with a sample of the stain to be used.
- **Concrete banded with pavers:** Care should be taken to choose a color that blends with the banding. Too much contrast will draw attention to the driveway and away from the home.
- **Driveway Engraving:** It is recommended that engraving patterns be kept simple so as not to draw undue attention to the driveway. Any proposed engraving must have the design submitted for review.



Etched Concrete Driveways

- **Patterned Staining:** This is not an approved application.
- **Painted Concrete:** This is not an approved application.

Sidewalks

Staining of street sidewalks is not permitted. Some neighborhoods have a mix of concrete and paver bricks. Please be aware that a paver brick driveway would not be approved for staining a different color.

Edge Curbing

Residents seeking to create a barrier between driveways, walkways, and planter beds to reduce mulch or similar washout are urged to consider natural solutions in place of raised paver or concrete barriers. The ALC does not regard this type of curbing as an appropriate architectural element that enhances the home or the natural landscape setting of the home. Additionally, there are concerns over the maintenance issues of curbing. Concrete curbs may affect drainage and, with age, show cracking, discoloration, staining, lifting, and splitting.

Approved and adopted on April 21st, 2022 by the Board of Directors in accordance with the Declaration of Covenants, Conditions and Restrictions for University Park. Nothing in this document shall be retroactive and any action taken under the previous guidelines is still applicable.

Preferred materials for use to border driveways and walkways include low hedge-form material (*i.e.*, *dwarf Podocarpus*, *Ilex Schilling*) or the use of ground cover to buffer between the landscape and hardscape (*i.e.*, *Parsonii Juniper* & *Asian Jasmine*). This natural approach is complementary to the design philosophy of University Park. If a hardscape solution is requested, then the following criteria must be followed:

- No poured concrete edging is permitted. Only paver bricks or similar stone material may be used.
- The color, style and/or finish should blend with the home, driveway, and walkway.
- If the driveway and/or sidewalk currently consists of paver bricks, the landscape bed edging should be of the same style and color.
- The curbing shall be no greater than four inches (4”) in height.
- The curbing is to border the driveway and walkway adjacent to planted bed locations only.
- Maintaining the curbing in good condition will be a requirement of any approval.

Paver Brick Design

At the time of original construction, each neighborhood had its own guidelines for paver driveways and walkways relating to an approved color matrix. With remodeling taking place, residents may wish to change their paver brick selection, and these guidelines are designed to assist in the selection.



Paver pattern



Pavers with complementary border

General guidelines are:

- The preferred pattern for paver brick selections is in the style of “Cobblestone” or “Old World.” Some contemporary patterns would not be in keeping with the style of the neighborhoods. Please indicate the pattern on your application.
- Walkways from the driveway to the home are preferred in the same material as the driveway; however, upgrading a walkway to paver brick in place of concrete may be done in isolation from the driveway.
- Pavers should harmonize with the color of the roof and the main body color of the home.
- High contrast paver colors and patterns (including banding) may not be approved if the eye is drawn away from the home.
- A paver brick sample is always needed when submitting to the ALC for approval.

Approved and adopted on April 21st, 2022 by the Board of Directors in accordance with the Declaration of Covenants, Conditions and Restrictions for University Park. Nothing in this document shall be retroactive and any action taken under the previous guidelines is still applicable.

Whitebridge Court Paver Brick Installation

When the architectural and streetscape design for Whitebridge Court was planned, an important element was the consistency of look and style to create a balanced approach throughout the neighborhood. Over time, this has succeeded well, and the streetscape maintains a balanced and attractive look. In recent years, homeowners have wanted to change the material for the courtyard and walkway areas leading from the driveway to the home. Residents wishing to improve these areas through the use of paver bricks, in place of the existing concrete, can do so by adopting the following criteria on colors and textures. This is designed to maintain a proper balance in the neighborhood.

The ALC reviewed paver brick colors and patterns focusing on subtle colors to blend with the colors of the homes and roofs.

General Regulations:

- Pavers may be installed within courtyards and on walkways leading from the driveway/apron to the front entry of the home, independent of the driveway/apron which can remain concrete.
- The paver bricks in the courtyard may be sized larger than those in the walkway. The walkway should be buffered at the courtyard with a “soldier course” which should also delineate the external line of the walkway.
- The paver pattern and color for the walkway and driveway (if the driveway is paved) must be the same. The courtyard paver pattern may vary from the walkway and/or the driveway pattern and the size of the courtyard pavers may be different, provided it is separated from the walkway by a “soldier course”. And, finally, the paver color must match throughout.
- Due to the nature of the “paired” homes in Whitebridge Court, consideration has been given to consistency among the “paired” driveways. If a resident of a “paired” driveway wishes to apply for approval to install paver brick in the driveway, as well as the walkway and courtyard, then it is required that the “paired” neighboring home must follow suit with the same pattern and style at the same time. Any “paired” home resident proposing to install a paver brick driveway should consult with their neighbor(s) and submit a joint application.

External Lighting

Exterior Garage/Coach Lights

Generally, garage/coach lights should be consistent with the prevalent look in the neighborhood and in the color ranges of black, white, “Verde” or bronze. Some neighborhoods have specific criteria for color and style so please contact the ALC before purchasing your desired light.

Contemporary style lights are becoming more popular, and approval may be given when it complements the design of the home.

Approved and adopted on April 21st, 2022 by the Board of Directors in accordance with the Declaration of Covenants, Conditions and Restrictions for University Park. Nothing in this document shall be retroactive and any action taken under the previous guidelines is still applicable.

Landscape Lighting

Lightbulbs are to be white or clear. No permanent colored or blinking lights are permitted. Lighting must be directed at the house and landscaping lighting should not face the street or neighboring homes nor spill over onto a neighbor's property. Any lights at the rear of the property should be directed only at the house and landscaping and not toward common areas.

Security Lighting

Floodlighting or lighting controlled by motion detectors should follow the same guidelines as landscape lighting. The potential of frequent and continual illumination means the lighting locations must be considered carefully in order to respect neighboring property. Lights must not point at neighbors nor cast light (spillover) to neighboring window openings. Lights must be downcast to avoid long view issues. The lens color is to be clear.

Solar Landscape Lighting

Solar landscape lights used to illuminate sidewalks and pathways, if used, should be of good durable quality with no exposed wiring. Used mainly for safe passage in the evenings, their height should be no greater than knee high with their illumination pointed downward toward the walkway.

Strobe Lights/Burglar or Fire Alarm Exterior Light

Certain burglar alarm or fire alarm systems incorporate a strobe light designed to be installed exterior to the home. In such cases, the criterion for installation is as follows:

- Light to be installed under the eaves of roof at the corner of the house.
- Lens color must be clear.

Gas Yard Light – see [Yard Lights, Gas](#)

Fencing

All fences need ALC approval. Fencing may be used at the rear of the home and, to a lesser extent, to the side of the home, subject to meeting proper setback requirements, respecting easements and meeting approved color selection.

Generally, fencing up to forty-eight inches (48”) in height will be considered in two materials – PVC (or vinyl) and aluminum in “wrought iron” effect. Wooden fencing and wrought iron are not approved due to maintenance difficulty.



Diamond Picket #1



Victorian Pool Fence #1



White PVC or Vinyl Fencing



*Black or Bronze Aluminum in
"Wrought Iron" Effect, Prestige Top Rail*

In all cases of fencing requests, applicants are advised that a landscape plan will be required showing screening to the proposed installation. Hedge-form material is to be the dominant landscape material in order to screen the fence from neighboring property. Tree forms and larger shrub material may be required to assist in minimizing the impact the fence may have on surrounding property.

Maintenance of the fence, and of the entire area enclosed by the fence, including sod, landscaping and irrigation, is the responsibility of the homeowner. The yard maintenance companies operating in "landscaped-maintained" neighborhoods are not responsible for maintaining within these fenced areas, and each homeowner must make their own arrangements for upkeep.

Dog Run Fencing - see [Dog Runs](#)

Invisible Fencing

Invisible fencing for animal control that is buried in the ground is pre-approved, subject to the following:

- Any changes to landscaping require the approval of the ALC.
- Signage to identify the fence must be small and discreetly located.

Please note that the installation of an invisible dog fence does not relieve the owners of their responsibilities for proper dog control, per Manatee County & the Sheriff's Department ordinances, which state:

"Dogs residing in yards with invisible fences may be outside while under direct control by their owner, or some other individual, but may not be left outside unattended. Dog owners leaving their dog outside unattended, even with an invisible fence, may be subject to fines and/or subsequent arrest. Any dog outside its own yard must be on a leash."

Flags

The flying of the American flag should be managed according to correct and proper protocol, including lighting (see [Florida Statute 720, section 304](#)).

Approved and adopted on April 21st, 2022 by the Board of Directors in accordance with the Declaration of Covenants, Conditions and Restrictions for University Park. Nothing in this document shall be retroactive and any action taken under the previous guidelines is still applicable.

Team Flags

Professional and college team sports flags may be displayed on game day only.



Garden Flags

Garden flags, such as seasonal or themed flags, must be displayed inside the lanai or in the rear yard for the enjoyment of the homeowner.



Foundation Plantings – see [Perimeter Plantings – Foundation and Lanai](#)

The complete perimeter of the home including the lanai cage should be planted with shrubbery which may also include annual and perennial flowers. As plants die or become weak and sparse, they should be replaced to maintain a neat appearance around the home. It is best to avoid planting trees close to the foundation of the home since the roots may grow under the foundation and cause lifting.

Front Doors and Entries

Entry doors, in either single or double format, with sidelights and transom above are visually important to the home. When making door selections, please consider the relationship between the door (solid with glass insert), the side lights and the transom above. The design and shape of each section should be complementary so that the entry reads as one architectural element.

Approved and adopted on April 21st, 2022 by the Board of Directors in accordance with the Declaration of Covenants, Conditions and Restrictions for University Park. Nothing in this document shall be retroactive and any action taken under the previous guidelines is still applicable.

In the examples below, the doors, adjoining windows and transom all relate to each other in shape and style.



This home demonstrates the relationship among the doors with insert glass panes, the circle top transom and the window to the side.



*This home shows the relationship between the doors with inserts **and** side lights, the curved transom and the window to the side.*

When the home was first built, the relationship between the glass in the transom and the door panels was consistent. Homeowners should be aware that a change in the style of the door may require a change to the glass or style of the transom.

Fruit Trees – Installation and Maintenance

Residents who are interested in planting fruit trees in their yards should follow these guidelines:

- Fruit trees may only be located to the rear of the property in areas that will not restrict or obstruct sight lines from neighboring homes.
- The homeowner is required to personally maintain these so that fallen fruit does not attract unwanted animals or interfere with regular lawn maintenance.
- Fruit trees are accent trees and should not be over planted.

Garages & Garage Doors – Repainting or Replacing

Garages

All homes must have an enclosed garage adequate to house at least two large-sized automobiles. All garages must have doors that are maintained in useful working condition and that are operated by electric door openers.

Except when in actual use, garage doors must be kept closed.

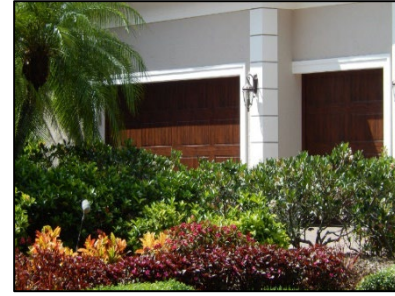
No garage shall be converted to other usage without the substitution of another garage.

Painting or Replacing Garage Doors

If you plan to repaint or replace your garage door, please submit an application to the ALC. Include the paint color you plan to use for the garage door and any banding color, taking note of the following requirements:

Approved and adopted on April 21st, 2022 by the Board of Directors in accordance with the Declaration of Covenants, Conditions and Restrictions for University Park. Nothing in this document shall be retroactive and any action taken under the previous guidelines is still applicable.

- If the doors are banded with a trim detail to all three (3) sides, then the doors may be painted either in the same color as the trim/band color of the home **OR** in the body color of the home. Note that, in each case, the banded returns to the doors should be painted in the trim/band color so that the banding reads as a three-dimensional element.
- If the doors are not banded, or are only banded along the top, then the doors may be painted the main body color of the home **OR** may be left white in the delivered door state.



Garage door banded on 3 sides

Garage door banded on top only

Garage door with no banding

Garage door matching front door

(note banded returns painted in trim color)

In some cases, garage doors may be painted in the same color as the front entry door where such color is in the family of deep mahogany or brown. Garage doors like this may be considered where the home design has sufficient overall mass, width of facade, and roof color to support this approach. Contact the ALC for direction when considering this change.

If you plan to **replace or modify your garage doors**, include the manufacturer and style number of the new door and the color in your request to the ALC.

The preferred choice in garage door design is for it to be windowless so as not to attract more attention to the door over the architectural design of the home facade. In the event that windows are required, then the style Stockton may be approved.



Stockton garage door (approved replacement style)

Gas Yard Light – see [Yard Lights, Gas](#)

Approved and adopted on April 21st, 2022 by the Board of Directors in accordance with the Declaration of Covenants, Conditions and Restrictions for University Park. Nothing in this document shall be retroactive and any action taken under the previous guidelines is still applicable.

Generators – Installation

Portable emergency generators used during power outages must not be stored outside the home and only operated exterior to the home for those periods of time when power outages are occurring.

Permanent emergency generators must be installed in an external location (*similar to the location of a/c or pool equipment*) and be screened by no. 10 (ten (10) gallon size) hedge-form style landscape material (*planted on twenty-four inch (24”) centers*) that have the capacity to fully screen the equipment. Some neighborhoods require walls to screen equipment and, in those instances, similar landscape screening is required to the exterior of the walls.

Recommended screening materials are Viburnum Odar or Suspensum, Podocarpus (not dwarf), or Walter’s Viburnum. Landscaping material must be confirmed at the time of submittal.



Golf Course or Common Area Vegetation Trimming

Residents wishing to trim or prune native vegetation around their home, or backing up to the golf course or common area, must get approval from the ALC. Such pruning, once approved, will be at the homeowner’s cost.

A sketch denoting the areas to be pruned must be attached to the application. Types of existing plant materials, their current height and the proposed height after pruning is required. General guidelines for height of palmettos, after pruning, are three and one-half feet (3½’) near the greens and tees; however, palmetto stems should not be removed or cut back without approval. If you remove vegetation without approval, you may be required to replace it at your own expense. This request is \$25, paid via check made payable to UPCA.

Gutters and Downspouts - Installation & Color

All homes are approved for installation of gutters provided the following criteria are adopted:

- Gutters should match the fascia color (generally white).
- Downspouts should be painted in the house body color.
- Downspout extensions should, ideally, be set below the mulch line.

Approved and adopted on April 21st, 2022 by the Board of Directors in accordance with the Declaration of Covenants, Conditions and Restrictions for University Park. Nothing in this document shall be retroactive and any action taken under the previous guidelines is still applicable.

- In cases where the soffit or fascia are painted in a color other than white, consideration will be given to the gutters and downspouts being painted in a matching color.



Handicap Ramp

Homeowners may install a wheelchair ramp when it is necessary to access their home. If the homeowner elects to install a ramp on the exterior of the home, submit plans to the ALC prior to construction showing architectural specifications for the ramp. The idea is to construct a ramp that blends with the style of the home through a wise selection of building materials that integrate the ramp with the home's exterior.



Handicap ramp complementary to the home

Hurricane Shutters & Storm Protection

Shutters

Hurricane shutters and similar protective devices are approved for use in University Park. ALC approval is required before installation.

There are many types of devices available, such as accordion, roll-down, bi-fold, metal panel, fabric, Lexan/Kevlar and twin wall polycarbonate types, as well as more traditional shutter-style applications.



Accordion



Roll Down



Fabric

Approved and adopted on April 21st, 2022 by the Board of Directors in accordance with the Declaration of Covenants, Conditions and Restrictions for University Park. Nothing in this document shall be retroactive and any action taken under the previous guidelines is still applicable.



Lexan



Permanent

The application to the ALC should include the type of device or shutter and the location(s) where it is proposed that the shutters will be installed. Please submit a drawing showing the proposed locations. Supporting photos or manufacturer catalogues of the product will assist the committee in understanding the nature of device requested.

The ALC reviews the external color of the devices proposed and, generally, approves shutters or similar installations to be painted the trim/band color of the home for exterior openings (windows and doors). For shutters enclosing glass sliding doors opening onto the lanai and pool areas inside the pool cage, the body color of the home may be used as the paint color. Any permanent hardware (wall anchors, mounting tracks, etc.) must be painted to match the color of the surface to which they are mounted. Painted devices are required to be maintained in good condition and repainted in the event of flaking or peeling.

Clear, transparent or translucent style shutters or screens are not required to be painted.

Generally, ALC approvals are granted on the condition that these devices may be used only during periods of tropical storm or hurricane watches or warnings and related activity, and that the devices are to be removed once a storm has passed.

When to Leave Shutters in Place or to Remove Shutters

The ALC recognizes that many homeowners are not in residence all year round and, therefore, a dispensation is given in the case of homes where the shutters or protective devices meet the criteria for color as described above, or are of a clear, transparent material. This dispensation for devices to “remain in place” is available during the period of time generally referred to as “Hurricane Season,” extending between June 1st and November 30th, but not at other times.

All other protective devices not meeting the color or transparency criteria must be removed after a storm has passed. The one exception is permanent shutters. Usually, these shutters are in the accordion style and are non-removable. They may be opened and closed but they cannot be removed from the tracks. This type of shutter often cannot be painted because paint may cause the hinges to become inoperable. They typically are marketed in only two or three colors, so it is often difficult to match the shutters and hardware to the trim or home colors. As a result, permanent shutters will be approved on a case-by-case basis. If approved, they must be left in the open position except during

Approved and adopted on April 21st, 2022 by the Board of Directors in accordance with the Declaration of Covenants, Conditions and Restrictions for University Park. Nothing in this document shall be retroactive and any action taken under the previous guidelines is still applicable.

tropical storm or hurricane watches or warnings and related activity. Landscape screening will be required in areas where the shutters are visible to neighbors or neighboring property.

Wind Screens

The ALC acknowledges that wind screens installed over sliding glass windows onto lanai and pool areas are available in limited colors, often brown. Provided these devices are located inside the pool cage, then they may be left in position during the dates referenced above. All others, however, must be removed once a storm or watch/warning has passed.

All such protective devices require the approval of the ALC. In addition, if a homeowner is unsure whether their devices meet the criteria to “remain in place” then please contact the committee who will review a request for clarification. Simply send an email to alc@upcai-fl.com with the details of your devices in order to enable a review.

A number of the wind screen devices are impervious to UV deterioration. The ALC has heard that not all threads used to sew these fabrics are of the same standard and, so, homeowners may wish to verify this with their installers/manufacturers.

Invisible Fencing – see [Fencing, Invisible Fencing](#)

Irrigation

A separate irrigation water source is provided to each lot to promote conservation of potable water consumption. Neither private well nor pond water withdrawals for irrigation purposes are allowed. All irrigation systems must be of an automatic underground type with time clocks and other equipment screened from view. Full coverage of the landscaped and grassed areas of the lot must be achieved. Pop-up spray rotors or drip irrigation systems are required.

Your lot will be watered at a specified time each week. You can find the time from your neighborhood chair. You will not have control over when your irrigation water is turned on. It will be automatic.

Landscaping

Any external work that changes the existing landscape design and material will require a landscape plan to be submitted showing the restoration/renovation of landscaping. Plans should include designs and materials to be used, both quantities and sizes.

Trees and plants grow fast in Florida and re-landscaping over time is often needed. Plants outgrow their original placement and overgrowth is often evident.

Approved and adopted on April 21st, 2022 by the Board of Directors in accordance with the Declaration of Covenants, Conditions and Restrictions for University Park. Nothing in this document shall be retroactive and any action taken under the previous guidelines is still applicable.

University Park follows Florida-friendly landscaping guidelines. The aim of these guidelines is to reduce the use of irrigation water as well as chemical fertilizers and pesticides that can be harmful to local fauna, household pets and humans, kill native vegetation, pollute waterways, and contribute to algae and red tide blooms along the coast. Use of Florida native plants is encouraged to conserve water, reduce costs, support wildlife and pollinators, and generally “bring life to the landscape.” Here are some links to Florida-friendly and Florida-native plants:

- <https://ffl.ifas.ufl.edu/homeowners/publications.html>
- <https://www.fnps.org/plants>
- [https:// gardeningsolutions.ifas.ufl.edu/plants/ornamentals/native-plants.html](https://gardeningsolutions.ifas.ufl.edu/plants/ornamentals/native-plants.html)

You can browse the University Park website at <https://www.upcai-fl.com> to find a detailed plant list for our specific area. Look for “[Plants for University Park](#)” on the page titled “*Arch. & Landscape.*”

Many exotic plants sold in local nurseries are not cold-hardy and may be seriously damaged or killed by a hard frost or freeze. If this occurs, they will need to be replaced. For this reason, it is important to select plants that are cold-hardy and appropriate for our location (we are planting zone “9b”).

Bedding Material - see [Mulch](#)

Bed Edging – Paver Bricks

Paver brick landscape curbing is *not* an architectural element that enhances the home or the natural landscape setting of the home. Additionally, the ALC has concerns over the maintenance of such curbing. Cracking, discoloration, staining, lifting, splitting, and other issues appear over time. Drainage may be affected, small beds encircled in concrete will hold water, and ground cover may die.

Preferred materials for use to define landscape beds include low hedge-form material (i.e., dwarf Podocarpus, Ilex Schilling) or the use of ground cover to buffer between planted beds and sod (i.e., Parsonii Juniper & Asian Jasmine). This natural approach complements the design philosophy of University Park.

If a hardscape edging solution is requested, the following criteria must be followed:

- No poured concrete edging is permitted. Only paver bricks or similar stone material may be used.
- No partial bed installations. Installation is to be around the main beds of the home only. This is especially relevant to landscape beds that may be shared with a neighbor.
- No small circles (i.e., around a single tree or light post) - no installation around mailbox, yard light or utilities will be approved.
- If the driveway and/or sidewalk consists of pavers, the landscape bed edging should be of the same style and color.

Approved and adopted on April 21st, 2022 by the Board of Directors in accordance with the Declaration of Covenants, Conditions and Restrictions for University Park. Nothing in this document shall be retroactive and any action taken under the previous guidelines is still applicable.

- If the driveway is concrete, the preferred style is a two and one-quarter by six by nine inch (2¼” x 6” x 9”) tumbled Belgian paver, as shown below, in a neutral color. These may be installed up to three (3) pavers high, depending on the purpose and location.



- If the driveway is of StampCrete material, the pavers should match the color of the StampCrete as closely as possible.
- Submission should include a sketch of the home and the beds to be incorporated.
- The applicant’s agreement to maintain the curbing in good condition will be a requirement of any approval.
- Residents may be required to remove the curbing if it is not maintained.

Low-Maintenance Landscaping Along Ponds



Native Beach Sunflower growing on pond’s edge

In accordance with recommendations from the University of Florida and the Institute of Food and Agricultural Sciences, residents living along ponds and other bodies of water should maintain a maintenance-free zone of at least two feet (2’) between the landscape and the water’s edge. This buffer zone along the waterfront should have hardy plants that receive no fertilizers, pesticides or irrigation after establishment.

Guidelines are available in “*Living on the water’s edge: Homeowner’s guide to low-maintenance landscaping along stormwater ponds*” (<https://sarasotabay.org/wp-content/uploads/SBEP-WatersEdge-Ponds.pdf>) and in “*The Florida Yards & Neighborhoods Handbook*,” (https://fl.ifas.ufl.edu/media/fflifasufledu/docs/FYN_Handbook_2015_web.pdf).

Mulch

University Park has experimented with a variety of materials for landscape bedding since its inception. Based on this experience, the ALC is firmly committed to the use of natural materials wherever possible. The preferred approved materials comprise various mulch and/or nuggets as follows:

Approved and adopted on April 21st, 2022 by the Board of Directors in accordance with the Declaration of Covenants, Conditions and Restrictions for University Park. Nothing in this document shall be retroactive and any action taken under the previous guidelines is still applicable.

- Cypress mulch (grade A or B);
- Pine Bark nuggets (large and/or small);
- Cypress mulch (grade A or B) colored “Chocolate Brown;”
- Melaleuca mulch (known commercially as FloriMulch);
- Eucalyptus mulch; and/or
- Pine straw, which may be used in natural settings, but is not suited to landscaped beds.

The ALC will not approve the use of:

- Colored mulch other than “Chocolate Brown;”
- Cocoa mulch, which is toxic to pets;
- Rubber mulch, or other composite mulch material; and/or
- Stone or gravel used as mulch.

Residents should be aware that “Chocolate Brown” mulch may be more expensive than the standard Cypress mulch. Neighborhood budgets for “landscape-maintained” neighborhoods are generally based on the use of Cypress mulch.

Volcanic rock or other stones as bedding material are not approved. Stones do not contribute to the soil’s nutrient content. The occasional use of river stone as an accent may be approved, as follows:

- River stone in the landscape bed should not exceed ten percent (10%) overall;
- A color palette in the neutral to dark range is encouraged (beige/brown, gray, black) - bright colors and white stones are not approved; and
- A border of mulch should be installed between the stones and the grass.

Be aware that the use of stones presents a potential hazard to windows when edging equipment or weed whipping equipment is being used around the house. Residents have advised of broken window panes. Information concerning the use of mulch, and the varieties suited to Florida landscaping, can be found on the website for the University of Florida Institute of Food and Agricultural Sciences.

Perimeter Planting – Foundation & Lanai

All homes should have full perimeter planting in mulched beds on the four (4) sides of the home, including the lanai. Over time, planting on the sides of homes can become neglected resulting in bare, open expanses of wall. These areas are required to be replanted to maintain a consistent perimeter.

Re-landscaping

Landscape improvements are encouraged, and the ALC is pleased to work with homeowners in providing guidance to assist in developing their plans.

Approved and adopted on April 21st, 2022 by the Board of Directors in accordance with the Declaration of Covenants, Conditions and Restrictions for University Park. Nothing in this document shall be retroactive and any action taken under the previous guidelines is still applicable.

All landscape changes that alter the original or existing landscape plan to a home require approval. The following criteria should be adopted in considering plans to make changes:

- Mulching can also include the use of pine bark nuggets as well as pine straw in more natural areas.
- If you are replacing like with like (due to a dead plant) then you do not have to submit for approval. The container size of the replacement plant should match the size of the other plants in the bed or yard.
- If you are trimming or pruning, or cutting back to accepted horticultural standards, then you do not have to submit for approval.
- Gravel or rock shall not be considered as a substitute for a ground-cover or lawn.
- If you are making changes, then you should submit your application along with a landscape plan showing the proposed changes. You should identify the bed areas in relation to the home that you plan to change and may submit a preliminary sketch for early guidance. Plants and tree materials need to be defined by type and size. Photographs of existing conditions are required.

Lighting, External – see [External Lighting](#)

Mailbox Replacement & Repairs

- Mailboxes are to match within the neighborhood.
- In the event of a damaged mailbox, contact your neighborhood chair or Park Boulevard Management, who will furnish you with the mailbox model number and vendor who can repair or replace your mailbox (at homeowner expense).
- All mailbox numbers must remain consistent within the neighborhood.



Country Style



Victorian Style – in white and “Verde”



*Barcelona Style – in white & “Verde”
(black not shown)*



*Barcelona style with
Country Style post*

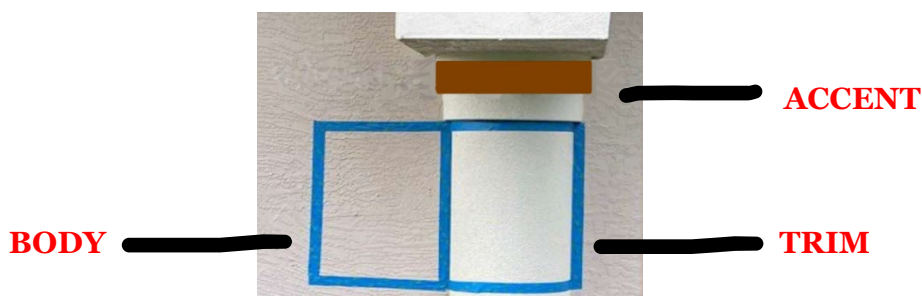
Native Vegetation Pruning – See [Golf Course Vegetation – Trimming](#)

Approved and adopted on April 21st, 2022 by the Board of Directors in accordance with the Declaration of Covenants, Conditions and Restrictions for University Park. Nothing in this document shall be retroactive and any action taken under the previous guidelines is still applicable.

Painting or Repainting Home Exterior

Whether a homeowner is repainting in the same color or a new color, color selections require the approval of the ALC. Paint fades over time and a request to repaint a home in the “same color” when using a color match may not achieve the goal. Paint a sample of the “same color” bordered by painter’s tape to show where the new paint is located.

Your submission should include your paint choices with the paint manufacturer’s names and numbers, along with paint chips. Also, a one and one-half by three-foot (1½’ x 3’) sample of the proposed colors must be applied to the home in a position visible from the street to determine the relationship with the roof tile color, paver color and the neighborhood.



Example of paint sample marked with blue painter’s tape

Site reviews may be conducted to determine if the submitted paint will coordinate with your roof tile, walkway and driveway pavers (if applicable), as well as the homes to either side and the neighborhood palette.

If the garage doors and windows are banded, their returns must be painted in the trim/band color.

Paint colors inside the pool cage or lanai that differ from the body color of the home will need to be reviewed and approved.

Perimeter Plantings – See [Foundation Plantings](#)

Plants for University Park

Our Climate

In University Park, we live in the subtropical growing zone “9b” which means our plants thrive in heat and humidity and hate the cold. We recommend using a Florida-friendly landscape approach in your yard that is designed, installed, and maintained according to the “9 Principles of Florida-Friendly Landscaping,” as follows:

1. Right Plant, Right Place
2. Water Efficiently
3. Fertilize Appropriately
4. Mulch

Approved and adopted on April 21st, 2022 by the Board of Directors in accordance with the Declaration of Covenants, Conditions and Restrictions for University Park. Nothing in this document shall be retroactive and any action taken under the previous guidelines is still applicable.

5. Attract Wildlife
6. Manage Yard Pests Responsibly
7. Recycle Yard Waste
8. Reduce Stormwater Runoff
9. Protect the Waterfront

You can find more details at: <http://fyn.ifas.ufl.edu/>.

What to Plant

Located on the ALC's portion of the University Park website, you will find a list of trees, shrubs, and flowering plants that are proven winners in our microclimate. Some are native plants and other plants that have learned to successfully adapt to our climate. Click on the following link for a guide to plants that are grown successfully in University Park: "[Plant Resource List](#)."

Remember that University Park is a wildlife sanctuary - home to many birds, bats, squirrels, rabbits, bobcats, snakes, armadillos, opossums, and foxes. This habitat environment sets our community apart from others.

Invasive Plants

Not all plants on the Florida "Invasive Plants" list are invasive everywhere in Florida. If you plant something from the "Invasive Plants" list, make sure it is in a container or in a small bed where it won't spread into your lawn or your neighbor's lawn.

Some invasives have aggressive root systems that often grow so densely that they smother the root systems of surrounding vegetation (i.e., oyster plant). Certain invasives produce chemicals in their leaves and root systems which inhibit the growth of the plants around them (i.e., Brazilian Pepper Tree). Invasives like Mexican Petunia have far-reaching root systems that send up new plants far away in places you don't want them to be. Click the following link for a list of Florida's invasive plants: <https://plants.ifas.ufl.edu/plant-directory/>.

Pool Deck and Pool Cage

Pool and Cage Installation

Homeowners who wish to install pools must adhere to the following criteria:

- A drawing showing the pool design, including setbacks from the property line to the deck, are required to be submitted, together with details of any raised planter areas around the pool.
- The pool cage is required to be white or bronze frame, and the pitch is to be mansard to match the pitch of the roof of the house.
- A landscape plan is required at the time of submission showing continuous planting around the pool cage of hedge-form material. Tree forms at corners or centered on the cage may be required to offset the mass of the screen.

Approved and adopted on April 21st, 2022 by the Board of Directors in accordance with the Declaration of Covenants, Conditions and Restrictions for University Park. Nothing in this document shall be retroactive and any action taken under the previous guidelines is still applicable.

- Pool equipment is to be screened by no. 10 (ten (10) gallon size) plant material.
- Generally, the decor within a pool cage or lanai does not need to be approved by the ALC; however, any substantial embellishments, as well as paint colors which differ from the body color of the home, will need to be reviewed and approved.
- It is recommended that you advise your neighbors (and your neighborhood chair) of the work that is to take place and the proposed means of access. A condition of any approval will be to assure your neighbors that any damage caused to their property during construction (to sod or landscaping, irrigation lines, etc.) will be repaired at your cost upon completion of the installation.
- As a reminder, any window replacements, additions or hurricane-window coverings that are inside the lanai still require ALC approval.

Be considerate in limiting the site work hours, noise, and construction debris in order to minimize disturbance.

Pool Cage Installation for Two-Story Homes

University Park is committed to maintaining a single-story pool cage design (in white or bronze with mansard sides to match the pitch of the roof) in order to minimize the impact that pool enclosures have on the architectural design of the home.

In certain circumstances, a pool cage may be elevated to meet a second-story component of the home. In each and every case, a preliminary design must be submitted for approval and the final design must be approved before installation.

The following criteria will apply:

- A specific pool cage design for the home to reflect the characteristics of the rear profile and roof pitch will be required.
- The pool cage is not to extend above the second-story fascia line.
- The pool cage may start at a single-story fascia level on the home and rise to meet the elevated section.
- The pool cage must not exceed the height of the second-story.
- Additional landscape screening will be needed to the areas of increased elevation.
- The pool cage design submitted should show the design detail of the structure and bracing.
- Impact to, and views from, neighboring properties will be taken into account in the review process.

Pond Bank Retention Materials

Homeowners who wish to install retaining walls or use other means of pond bank retention on their lots must adhere to the following criteria and submit their plans to the ALC for approval.

Approved and adopted on April 21st, 2022 by the Board of Directors in accordance with the Declaration of Covenants, Conditions and Restrictions for University Park. Nothing in this document shall be retroactive and any action taken under the previous guidelines is still applicable.

Approved materials are:

- Wood retaining walls.
- Rip-rap covered with fill and sodded to maintain a consistent look with other grassed pond banks.
- Geotube or Enkamat with Bacopa planted on top to stabilize the material.

In the event of a wood retaining wall being employed, the owners/installers must ensure that the installation does not negatively impact the drainage from the adjoining homesite, particularly at the lot line. The banks immediately adjacent to the ends of the retaining wall must be stabilized to assure the proper drainage from both their homesite and that of their neighbors. Those homes that are on the curved part of the pond should angle the wall in segments to follow the curve of the pond bank.

Each submission to the ALC must include details of how this is to be achieved. The homeowner must submit a detailed plan and cross-section of the proposed installation for the committee to review.

Docks, decks or any other structure are not permitted to be attached to the retaining wall. Docks built on Braden River require a Manatee County approval, as well as ALC approval, **before** construction begins.

Rip-rap may not be used in isolation and left as an exposed element.

Rip-rap may only be used if it is covered with fill and then sodded to provide a grassed finish to the pond bank. Landscape fabric may be required to stabilize the rip-rap and the adjoining bank areas. As with a wooden retaining wall, the homeowner must ensure that such installation does not compromise the drainage from the adjoining homesite. The submission to the ALC must include details of how this is to be achieved.

These methods of retention of a pond bank may be adopted independently in the same neighborhood. It is acceptable for adjoining homesites to use any of the methods described. The ALC's preference will always be toward a consistent approach, but the committee recognizes this is not always practical or attainable. Early contact with the ALC is advised to determine the approach to be taken.

An ALC submission and an approval are required in every case before work is undertaken. Once installed, the maintenance and repair or replacement of the installed material is the responsibility of the homeowner. The policy for individual homesites is also applicable to pond banks falling under association control or ownership. The same procedures apply with respect to ALC submission and approval. Maintenance and repair or replacement will then be the responsibility of the association.

Approved and adopted on April 21st, 2022 by the Board of Directors in accordance with the Declaration of Covenants, Conditions and Restrictions for University Park. Nothing in this document shall be retroactive and any action taken under the previous guidelines is still applicable.

Rain Barrels

Local government and other authorities have encouraged the use of rain barrels to provide limited, supplemental water for irrigation purposes.

The ALC has reviewed the types of barrels suggested and provides the following criteria and information for homeowners wishing to install barrels at their homes:



Installed Rain Barrel

- The rain barrel must not exceed fifty-five (55) gallons in size, corresponding with the size available through authorities such as Manatee County.
- The rain barrel must be either green in color or painted to match the wall color of the home.
- The preferred material to be used is plastic.
- The best location to site a rain barrel is directly under a downspout. This will impose limitations on where the barrels can be placed. The preferred location is at a corner of the home, at the rear or side of the property so as not to be visible from the street. The barrel should be located where the aesthetics will not directly impact neighbors or the neighborhood.
- The barrels may be elevated no more than two to three feet (2' - 3') above ground for ease of use and access for maintenance. The elevation provides a nominal increase in water pressure for use but no meaningful increase. Without the use of a pump, the rain barrel will only provide local water uses sufficient to provide hand-type water for the immediate area.
- Rain barrels may be situated at ground level.
- Manatee County, and other authorities, recommend anchoring the barrel to the wall to prevent tipping. If a homeowner wishes to anchor the barrel to prevent it from falling over, one option would be to strap it to the exterior of the home. The strapping, and any other associated material, would also need to be painted in green or the body color of the home, according to the color adopted for the barrel. If a full barrel were to leak, fall over or lose its seal causing the water to wash out the landscape beds or the soil around the home, the owner will be directly responsible for all repairs and/or re-landscaping.
- A submission to the ALC for approval is required for use of a rain barrel. Applicants should clearly show the proposed location with a sketch and identify the size, material, the color of the barrel proposed for use and the method of anchoring or securing the barrel.

For additional information, homeowners may wish to contact the Southwest Florida Water Management District (SWFWMD) or Manatee County. The following links will assist in obtaining additional information:

https://www.swfwmd.state.fl.us/sites/default/files/store_products/rain_barrels_guide.pdf and

https://www.mymanatee.org/departments/utilities/manatee_county_water_division/water_conservation/rain_barrel_program.

Approved and adopted on April 21st, 2022 by the Board of Directors in accordance with the Declaration of Covenants, Conditions and Restrictions for University Park. Nothing in this document shall be retroactive and any action taken under the previous guidelines is still applicable.

Remodeling or Rebuilding of a Home

Submit a preliminary proposal in the early planning stages of your design. The ALC will be able to help with information on setback requirements for a particular neighborhood and reduce time and effort.

Include your builder/contractor plans and a site plan showing setbacks and elevations to assist the review process. When you are ready for a full submittal, submit the appropriate review fee (check fee schedule for correct amount), as well as two full-sized sets of plans, including the site plan.

Roofs

Roof Tiles

Any proposal to color, stain or otherwise refinish roof tiles requires the approval of the ALC. In order to maintain the integrity of the roof styles in the neighborhood, the committee would not approve any significant color variation that does not blend with the neighborhood.

Replacement roofs require the approval of the ALC even if in the same color as the existing roof. Submissions to the committee should include a roof tile sample (or samples, if a blend) and confirmation on whether or not the exterior body color is proposed to be changed.

Only concrete-clad roof tiles and the synthetic roof tile made by the Brava brand are permitted (no metal or other materials are permitted at this time).

Roof tiles come in different styles and the version selected will depend on the style of the home. Examples of some of the most common roof tile selections can be found below.



Barrel



Shingle



S Profile

Whitebridge Court Roof Tile Replacement

When the architectural design for Whitebridge Court was planned, an important element was the consistency of look and style to create a balanced approach throughout the neighborhood.

Approved and adopted on April 21st, 2022 by the Board of Directors in accordance with the Declaration of Covenants, Conditions and Restrictions for University Park. Nothing in this document shall be retroactive and any action taken under the previous guidelines is still applicable.

Over time, many roofs have needed to be repaired or replaced and applications have been received for replacing roof tiles. This criterion has been developed to maintain the balanced look. Residents wishing to replace roof tiles will be given an approval of the ALC in accordance with the following:

- The approved tile for use in the neighborhood is “Entegra Tile – Gray or White Antique” from the Plantation Collection.
- Although it is not always possible, it is recommended that both neighbors replace their roof tiles at the same time to achieve a consistent appearance. If a neighbor is not willing to do so, please contact your neighbor before commencing work so that they are aware that the work will take place. Also, you will be responsible for any damage that may be caused to your neighbor’s roof during the construction process.

Satellite Dish Installation

ALC approval is not required to attach a satellite dish of less than one meter in diameter to the home; however, the following criteria must be met and approved when adding a satellite dish:

- Satellite dishes must have no greater diameter than one meter or three point two feet (3.2’).
- For the protection of the neighbors’ views and external appearance, dishes should be located on the left or right-side elevation, to the rear of the property, and mounted low on the walls where they can be screened by appropriate landscaping.
- Dishes should not be mounted on the front elevation, or on the roof. Within the pool cage area, consideration will be given to mounting the dish at a higher level. Dishes should not be located in a free-standing position away from the constructed home, as this interferes with proper lawn maintenance.
- Where possible, the dish, and accompanying structure, should be painted in the same body color as the house.
- An application for approval should be submitted with an appropriate landscaping plan when the dish is to be located in an external position.

Applying the above-mentioned criteria will not diminish reception but will add to the aesthetic characteristics of each home.

Screening Generators, Pools or A/C Equipment

All equipment must be screened by no. 10 (ten (10) gallon size) hedge-form style landscape material (planted on twenty-four-inch (24”) centers) that have the capacity to fully screen the equipment (i.e., Viburnum or Podocarpus).

Approved and adopted on April 21st, 2022 by the Board of Directors in accordance with the Declaration of Covenants, Conditions and Restrictions for University Park. Nothing in this document shall be retroactive and any action taken under the previous guidelines is still applicable.

Some neighborhoods require walls to screen equipment, and, in those instances, similar landscape screening is required to the exterior of the walls.

Generators will normally only be permitted to the side or rear of a home, and not in front of a home.



Examples of plants used to screen equipment

Setbacks and Variances

Homeowners considering extensions or additions to a home that would change the existing home envelope are encouraged to make early contact with the ALC to determine if setback encroachment is occurring.

Additionally, easements are located along most side and rear setbacks for drainage and other purposes. Construction that would encroach into these easements would not be permitted. Setbacks vary for each neighborhood and can be found in that neighborhood's Amended & Restated Declaration of Restrictions. The records of these Declarations are stored in The Community Center office, located at 8301 The Park Boulevard, University Park, FL 34201. Extensions of lanais or the construction of pools and lanais warrant early discussion with the ALC to clarify setback limitations.

Provided that the ALC is able to approve a request, then the ALC is empowered to issue a Variance to the homeowner for the construction of:

- | | |
|--------------------|--|
| Terraces or patios | Low platform or steps |
| Decks | Fences |
| Pool cages | Screened enclosures |
| Swimming pools | Low, open, unroofed & unscreened installations |
| Walls | |

A Variance issued by the ALC should be recorded by the homeowner in the official records of Manatee County, at their own cost. Please click [here](#) to be redirected to their website.

Approved and adopted on April 21st, 2022 by the Board of Directors in accordance with the Declaration of Covenants, Conditions and Restrictions for University Park. Nothing in this document shall be retroactive and any action taken under the previous guidelines is still applicable.

Solar

Solar Panel Installation

It is more and more common for the ALC to receive applications for solar panel installation, as well as geo-thermal and heat exchange installations, as heat sources for swimming pools and, also, photovoltaic panels to generate electricity.

While the ALC cannot endorse any one method, it does advise all applicants to carefully consider the costs and benefits of each energy-saving device before making a submission to the committee for an approval.

The approval of the ALC of any submittal relates only to the aesthetics of the installation and any specifications shown on the plans submitted to the committee. The committee makes no representation as to their sufficiency or adequacy. The approval of the committee shall not be construed or interpreted as a representation or determination that any governmental regulation or code has been properly met.

A detailed plan showing the proposed location must accompany the submittal. Initial site inspections will be carried out to ascertain the detail of the proposed installation. Following an approval, the installation shall receive a final inspection by the ALC to ascertain compliance with the submitted plans.

Florida Statutes, section 163.04, allows for energy panels on a dwelling to be oriented due south or within forty-five (45) degrees east or west of due south.

The installation of the solar panels on the roof will be reviewed as follows:

- Solar roof tiles must be cement-clad.
- Whenever possible, the first priority is to make every effort to ensure that no panels are installed on any roof or surface area facing the street. The second placement priority is to make every effort to minimize the visual impact of the panels to neighboring property.
- Every effort should be made to consolidate panels into one element/location on any given roof section.
- Screening (tree-form landscape material) may be required to minimize the visual impact of the installation to neighbors, the golf course and/or the neighborhood. Such screening is not intended to impair the efficiency of the system.
- The panels shall not overhang, protrude or be set at a higher or lower angle than the contour lines and slope of the roof on which they are installed.
- All supports, frames, substrates, stringers, brackets and similar ancillary devices must be painted to match the roof color.
- All piping to and from the solar panels must be painted the same color as the background roof, walls, or other parts of the building to which they are attached.

Approved and adopted on April 21st, 2022 by the Board of Directors in accordance with the Declaration of Covenants, Conditions and Restrictions for University Park. Nothing in this document shall be retroactive and any action taken under the previous guidelines is still applicable.

Energy panels are likely to collect debris from surrounding trees. The owner of the dwelling is obligated to keep the roof and panels free of unsightly debris to maintain the best possible appearance.

Solar Film Installation on Windows

Residents wishing to use solar film on windows to reduce sun glare must adhere to the following criteria. Film must be in the gray or bronze color range only. Visible light reflectivity must not be greater than twenty-five percent (25%) to avoid a “mirror” effect. Hurricane protection may require a different approach to the type of film and requires detailed submission to the ALC, including a sample.

*Contact: Madico, Inc., <https://madico.com/>; Telephone: 888.298.3033.

Statues, Sculpture, Fountains, and Art

Statuary, sculpture, fountains and all other exterior art forms are a matter of personal taste, and the ALC is careful to consider such applications in the context of the size, scale and type proposed. Classical ornamentation is compatible with the overall design philosophy of University Park and will be taken into consideration when reviewing submissions.

Generally, external statuary is for the enjoyment of the homeowner and, therefore, it is important that the overall streetscape view of your home is not compromised by its placement. It is recommended that statues be screened from street view to the extent that they are not dominant to the front of the house.

Fountains can be an appropriate feature that suits a neo-classical design. They can take many design forms from tiered structures to flow-over ceramic designs. All forms of external art will be reviewed on a case-by-case basis. The ALC reviews placement and visibility with great care and consideration of neighbors and the neighborhood.

Some residents prefer a contemporary look, and this will be considered, recognizing that a blend of styles is important.



Storm Shutters and Protective Devices – See [Hurricane Shutters & Storm Protection](#)

Approved and adopted on April 21st, 2022 by the Board of Directors in accordance with the Declaration of Covenants, Conditions and Restrictions for University Park. Nothing in this document shall be retroactive and any action taken under the previous guidelines is still applicable.

Tankless Water Heaters

Tankless water heaters must be installed inside.

Trees

Fruit trees – See [Fruit Trees - Installation and Maintenance](#)

Street trees

Street trees are intended to create an attractive streetscape and to provide a branching canopy the length of the street. They are not intended specifically for shade or to necessarily branch across a street. Their use and form are designed to be a soft lineal element in the streetscape design which, over time, will create a visually pleasing effect.

Manatee County requirements for locating street trees stipulate that they should be toward the front of the lot, behind the utilities and located on property boundary between lots. The front right-of-way of every lot in University Park contains designated areas for utility services. Each utility has its own space for the installation of its pipe, wire, or conduit. The gas, power, cable, telephone, water, irrigation, and other utilities are all located in this right-of-way. To the rear of the utilities is an area designated for planting street trees. Where a sidewalk is in place, the trees may be located further back from the curb.

***NOTE:** Topping, or the lopping of limbs, or circle-topping (lollipopping) of street trees is strictly prohibited (Section 714 of the Land Development Code) and may result in fines or other penalties.*

- **Placement**

- Street trees are an integral part of the look of University Park and were originally mandated by the county and required to be located in pre-determined locations and spaced according to code details.
- They are generally located behind the sidewalk within the right-of-way. Spacing is set at about fifty-foot (50') intervals but does vary within neighborhoods. The setback from the street is usually at, or around, twenty-five feet (25').
- The positioning of the street trees on lot lines is in conformity with the original Manatee County Development Code.
- Should a street tree be required to be replaced, then the location should follow the established criteria in the neighborhood to the extent possible.

Approved and adopted on April 21st, 2022 by the Board of Directors in accordance with the Declaration of Covenants, Conditions and Restrictions for University Park. Nothing in this document shall be retroactive and any action taken under the previous guidelines is still applicable.

- **Pruning**

- It is best to hire an arborist, a specialist in the care of trees, to prune your trees. The ALC recommends hiring someone with an ISA certification. *To find an arborist*, go to <https://www.treesaregood.org>.
- Branches must be trimmed up to fourteen feet (14') above street level and to eight feet (8') above sidewalks, according to Florida Department of Transportation (FDOT) standards.
- Removal of dead branches and Spanish moss is encouraged to promote new growth and the health of the tree.
- Make sure the lawn maintenance company in your neighborhood is familiar with the approved practices available for proper horticultural care.
- Manatee County requires that street trees be maintained to form a canopy. Shaping or “lollipopping” of the trees is strictly prohibited. Other bad forms of pruning are “lion-tailing” (big puffs of leaves left on the end of branches) and “stumping” (leaving a stump behind by failing to prune a limb back to the main branch).
- Although palms are not usually street trees, great care needs to be taken not to prune off leaves above the nine to three (9-3) o'clock horizontal position at the top of the tree.



“Lion-tailed” tree



Over-pruned, lopsided tree

- **Removal & Replacement**

- When removal and replacement of a street tree is requested, such applications will be dealt with on a case-by-case basis. A submission must be made to the ALC with a letter from a certified arborist detailing supporting reasons for any removal (i.e., Ganoderma, pine bark beetles, severe leaning). The arborist must also submit a copy of their current ISA certification. Each submission will be reviewed on-site, and removal will only be permitted if there are sufficiently compelling reasons.
- Any removal may require replacement of an approved tree. The replacement specifications will be given by the ALC.

Approved and adopted on April 21st, 2022 by the Board of Directors in accordance with the Declaration of Covenants, Conditions and Restrictions for University Park. Nothing in this document shall be retroactive and any action taken under the previous guidelines is still applicable.

Palm Trees

- It is best to hire an arborist, a specialist in the care of trees, to prune your trees. The ALC recommends hiring someone with an ISA certification. *To find an arborist*, go to <https://www.treesaregood.org>.
- Palms should NOT be pruned with limbs above the nine to three (9-3) o'clock horizontal. Scalping off upper palm fronds is known as a “hurricane haircut” or “mohawk.” Palms store their food supply in their fronds.



Two-Story Homes

Two-story homes are appropriate in some neighborhoods, and the ALC carefully reviews side setbacks and rear setbacks with regard to impact on adjoining homesites. In the case of two-story homes, greater setbacks may be required, or other measures needed in order to respect issues of view-impact and privacy. Early discussion with the committee is suggested. To determine if you can add a second story to your home, consult your own neighborhood’s “Amended & Restated Declaration of Restrictions,” which you should have received at closing.

Variances – See [Setbacks and Variances](#)

Walkways and Driveways – See [Driveways and Walkways](#)

Windows

Glass

Windows should be clear glass or a tinted glass of bronze, gray, or smoke colors. Reflective glass or reflective tinting may not be used, but heat-reducing glass film will be considered on a case-by-case basis.

It is recommended that replacement windows meet current hurricane-rated standards. You may choose from bronze, black or white window frames.

Awnings

Awnings are not generally approved but may be considered on a case-by-case basis inside the lanai.

Approved and adopted on April 21st, 2022 by the Board of Directors in accordance with the Declaration of Covenants, Conditions and Restrictions for University Park. Nothing in this document shall be retroactive and any action taken under the previous guidelines is still applicable.

Mill Finish Aluminum

Mill finish aluminum will not be allowed for windows, lanais or pool enclosures.

Frame Color

Only white, black, or bronze window frame colors are permitted.

Hurricane-Rated

Hurricane-rated windows are generally approved to bring some homes up to current code.

Solar Film - See [Solar Film Installation on Windows](#)

Exterior Window Shutters

Exterior window shutters, when used, should be operable or appear as such. Storm shutters may be installed over openings, only as an impending storm approaches.

Yard Decorations

Many homeowners enjoy decorative pots, urns and other ornaments in their planted beds and around driveways and entry areas. The ALC carefully considers these items in context to the overall yard design which includes planting beds, statues, sculptures, boulders, pots, benches, fences, trestles and fountains. Outdoor ornamental items do require approval from the ALC prior to installation.

The philosophy of “less is more” has restraint and a natural approach to materials at its core. This is the classical style in University Park. Classical ornamentation is compatible with the overall design philosophy of University Park. A contemporary look will be considered as we recognize that a blend of styles is equally acceptable.

Note:

- Potted plants placed in landscape beds, or within a landscaped section, should be earthen in color; terracotta, rustic earth tones and stone styles are permitted and encouraged.
- Pots on hard surfaces (entryways, driveways) offer variety with or without plants. Ceramic and stone are ideal choices.
- Potted plants should be used as accents that complement the landscape – not as elements with which to decorate the landscape.
- Small pots and containers along pathways, or intermittently arranged in landscape beds, are unlikely to be approved. Wheeled urns and pots or other bric-a-brac (i.e., mini-bikes, wheelbarrows, whirly gigs, metal animals, flags, etc.) are not approved.

Approved and adopted on April 21st, 2022 by the Board of Directors in accordance with the Declaration of Covenants, Conditions and Restrictions for University Park. Nothing in this document shall be retroactive and any action taken under the previous guidelines is still applicable.

If your style is to incorporate such elements, we encourage you to discreetly place them for your enjoyment or use in the lanai/backyard for additional ornamentation.

Examples of styles and designs that would meet approval are shown below.



Examples of yard art that would not be approved are shown below.



For more information on design elements in your landscape, see the ALC Criteria for [Statues, Sculptures, Fountains, and Art](#) and [Mulch](#).

Yard Lights, Gas

The yard light style and color is an established model per neighborhood. Maintenance is performed twice a year, but repairs are the responsibility of the homeowner. Repairs and replacement are handled by Gas Light Services who may be contacted at 941.232.8668.

Approved and adopted on April 21st, 2022 by the Board of Directors in accordance with the Declaration of Covenants, Conditions and Restrictions for University Park. Nothing in this document shall be retroactive and any action taken under the previous guidelines is still applicable.