

Community Information

FALL 2023





# WELCOME TO UNIVERSITY PARK



Whether you are one of our long-standing homeowners, a new resident or a visitor, the information contained in this booklet will provide invaluable information about University Park and the University Park Country Club.

University Park is a gated, master-planned residential community with 1200 single family homes in 32 distinctive neighborhoods with serene home settings. It is recognized as one of the pre-eminent mature communities (founded in 1991) in our area offering one of the most unique and sought-after locations in SW Florida. It is a resident-owned and governed community with a volunteer Board elected bi-annually.

The Park's scenic natural beauty covers 1,200 acres filled with tranquil ponds, soaring moss-covered oaks and lush tropical landscapes creating a park-like setting. Once you're on The Park Boulevard, you feel far removed from all the bustling activity just outside the gates where a vibrant and active recreational and social lifestyle awaits.

We encourage you to visit all our websites for the information you'll need to **live. dine. and play.** in this exclusive community.

University Park  
Community Association

University Park  
Country Club

University Park  
Recreation District

# From the GM



It's an exciting time at University Park and University Park Country Club and we are happy to tell you more.

At University Park Country Club, we offer University Park residents the quintessential Country Club experience; the perfect complement to your new home. University Park has been voted as one of the best master planned communities in America and best community in the region.

Our 27-hole Golf Course designed by Ron Garl, is the crown jewel of University Park set in a beautiful native Florida landscape. Consistently rated among the best in Southwest Florida and 4-star ratings from *Golf Digest*, our golf course is designed for exhilarating play whatever your skill level.

Our 11 lighted Har-tru tennis courts have been voted "Best Tennis Courts" by *Tennis Industry Magazine*. *Sarasota Magazine* readers consistently vote us as one of area's Best-of-the-Best places to play tennis. Our brand new state-of-the-art pickleball courts are spearheading a rapidly growing pickleball program. We also offer a fully staffed racquets and fitness facility year-round.

The Park Grille & Café, with its expansive lake views, is the place to enjoy contemporary cuisine in a coastal modern setting. The restaurant which recently underwent a complete renovation of the indoor dining facilities, will include a newly designed outdoor bar with firepits, coming early this year. Join us for a leisurely lunch, elegant dinner or after a round of golf.

University Park Country Club members also enjoy a full schedule of diverse member dining, holiday events and extensive golf + dining summer reciprocal program.

Our goal at University Park Country Club is to include every University Park resident in the activities and camaraderie that make our club experience so unique. It would be our pleasure to include you!

## INSIDE

- 02.....Welcome
- 03.....From the GM
- 04.....Neighborhoods
- 08.....Homeowner Advantages
- 13.....Map of University Park
- 14.....The Country Club
- 16.....Membership Opportunities
- 20.....Trial Memberships
- 22.....Golf & Golf Academy
- 24.....Racquets
- 26.....Fitness
- 27.....Weddings & Catering

live.dine.play.

# 32 Neighborhoods AT UNIVERSITY PARK

Scenic beauty, serenity, privacy, and a premier location sets University Park apart from other gated communities. The most fulfilling part of being in University Park, is living in one of its 32 idyllic neighborhoods. All the scenic enclaves were originally designed and are continually maintained to present lush, tropical landscape views that feature golf, water or conservation areas. Privacy is a priority for all home settings. Intimate neighborhood sizes foster friendships and social gatherings, all at the choice of each homeowner. Here's a brief description of the Neighborhoods at University Park.

## ALBEMARLE (LB0)

Albemarle is a private enclave with 11 custom homes from 4,000 to 8,000 sq. ft., in a mix of 1 and 2 story, million dollar-plus designs. The neighborhood is situated in the epi-center bordering the 9th and 18th fairways of the golf course. Homes feature large, screened lanais with pools, spas and entertainment areas.

## ASCOT (LM)

A secluded neighborhood of 31 single family homes, each with its own pool and a variety of scenic views including golf course, water and conservation areas. Conveniently located near the back gate of University Park, allowing easy access for quick trips to stores, restaurants and UTC complex.

## THE BOLTONS (LM)

This neighborhood is the smallest with 7 homes on a single cul-de-sac within walking distance to the Club. All homes have three bedrooms, a two-car garage, screened lanais, private swimming pools and scenic backyard views of the golf course or a natural preserve. Home sizes vary between 2,500 and 2,900 sq. ft.

## CHELSEA (LB0)

The Chelsea neighborhood is an intimate enclave of 9 spacious, custom homes located near the back of the community. Home sizes range from 4,000 to nearly 6,000 sq. ft., all with pools under large lanais with water views. Each home has a front view of a green, park-like expanse of grass and trees, with the golf course's 19th hole in the distance.

## DEVONSHIRE PLACE (LM)

Devonshire Place is a quaint, oak-lined maturely landscaped street of 18 homes. Each stand-alone, one-story home features 3 to 4 bedrooms with an enclosed lanai and pool overlooking a nature preserve. Homes range from 2,500 to 3,700 sq. ft.

## EATON PLACE (LB0)

Eaton Place is centrally located within easy access to the Club. There are 86 homes in the neighborhood from 2,700 to 3,200 sq. ft. Most homes have their own pool under screened lanais. Homeowners enjoy varying views from water, golf course or nature preserve. Common areas feature two parks with benches and a unique community "Little Library".



## GROSVENOR GARDENS (LM)

Located near the front Gatehouse entrance of University Park, Grosvenor Gardens features 29 custom homes in one and two-story designs, ranging in size from 3,000 to 4,500 sq. ft. on footprints of 1/3 acre or more. All homes border Grosvenor Court with panoramic views of the golf course, ponds and/or conservation areas. All homes feature private pools under spacious lanais ideal for entertaining.

*LM = Landscape Maintained. Under vendor contract and included in annual neighborhood assessment  
LB0 = Landscape By Owner. Maintenance is responsibility of the individual homeowners*





### HAMPTON GREEN (LM) [Community Pool](#)

Located near the front entrance, Hampton Green is the third largest neighborhood with 90 homes. Four floor plans are featured averaging 2,000 sq. ft. with two car garages and many pools with water and/or golf course views. All have various sized screened-in lanais. A popular neighborhood gathering place is the community pool, overlooking a large pond, serving as a recreation and social center.

### HYDE PARK (LB0)

Featuring 12 custom homes, Hyde Park is located toward the northern end of the The Park Boulevard, convenient to the back entrance. A neighborhood feature is a domed, circular Rotunda (gazebo) and Pergola alongside the water's edge at the entrance. Homes vary from 3,100 to 5,600 sq. ft. on 1/2 acre lots and surround a lake giving each home stunning water views. Each home has a large screened-in lanai area with pool.

### HEATHFIELD (LM)

Heathfield is located on the eastern edge with 37 custom homes ranging from approximately 2,400 to 5,000 sq. ft. All homes feature large lanais with pools under cover. Homes enjoy views of three ponds, the golf course, conservation land or combinations thereof.

### KENWOOD PARK (LM) [Community Pool](#)

Built in 2004, this is one of the newer neighborhoods. Located close to the front entrance, it features 77 homes ranging from 2,200 to 2600 sq. ft. in three different models. Most homes have either a pond, natural preserve or golf course view. This neighborhood has one of the largest community pools that also acts as the resident social center with casual, monthly get-togethers.

### HENLEY (LM)

Henley is a unique neighborhood with a separate gated entrance off Honore Avenue. 32 single-family homes surround a central green with a pavilion for neighborhood gatherings. Many homes with decks or dock facilities border the Braden River. A short nature trail leads to a spacious deck with vistas of the river. Henley is connected to University Park's main campus, offering a private sanctuary with easy access to all of its amenities.

### KNIGHTSBRIDGE (LB0)

Another smaller neighborhood, it provides an enclave setting with 17 custom homes lining a single street with each property enjoying privacy with golf course or water views. Located just down from the Country Club entrance, its homes range in size from 3,000 to 7,500 sq. ft.

### HIGHGATE (LM)

Situated near the north end of The Park Boulevard, Highgate is another example of an intimate neighborhood with 20 custom homes sized between 2,500 to 2,900 sq. ft., featuring three bedrooms, three baths and screened-in lanais with pools. Homeowners enjoy scenic views of either water or a nature preserve. It's convenient to the Park's back entrance, providing easy access to all the shopping and restaurant amenities and the University Town Center complex.

### LANGLEY PARK (LM)

Situated close to the Gatehouse and front entrance, Langley is another private enclave of 31 custom homes ranging from 2,600 to 4,000+ sq. ft. All homes are on a single street with spacious lanais facing large ponds on each side of the street providing homeowners scenic water and wildlife views.

*LM = Landscape Maintained. Under vendor contract and included in annual neighborhood assessment  
LB0 = Landscape By Owner. Maintenance is responsibility of the individual homeowners*

## 32 NEIGHBORHOODS *continued*



### LANDSDOWNE CRESCENT (LM)

The last neighborhood to be completed, Lansdowne features 19 custom homes. Ten of the nineteen homes enjoy views of the third hole on the golf course. Most feature their own pools under spacious lanai cages. A nearby pool and spa in the Lennox neighborhood is also available to homeowners and guests and regularly serves as a site for neighborhood gatherings and social events.

### LENNOX GARDENS (LM) [Community Pool](#)

The Lennox neighborhood is convenient to the front entrance and features 41 homes varying in size with 2-3 bedrooms ranging from 2,000 to 2,500 sq. ft. A centrally located community pool and spa, shared with Lansdowne Crescent, is the community's social center. A full social schedule of pool gatherings, golf outings and bus trips to area attractions and concerts occur throughout the year.

### MARLOW (LB0)

Marlow is a neighborhood of 22 custom homes located at the eastern terminus of Glen Eagle Crossing. Marlow homes enjoy scenic views of either the golf course, a pond, one of the many conservation areas or a combination thereof. Homes feature 3,350 sq. ft. of interior space with lanai and pool areas additional.

### MAYFAIR (LB0)

An intimate mixture of 11 meticulously landscaped custom homes ranging from 4,000 to over 10,000 sq. ft., all Mayfair homes are situated on a single private street with most enjoying expansive water views across the 12th hole of the golf course with one home having a long view of Hole #13. All homes have private pools under large, screened lanais.

### NOTTINGHILL (LM) [Community Pool](#)

Notting Hill features 52 homes representing several different models, tucked away off the last turnaround at the northern end of The Park Boulevard. Homes vary in size from 1,300 to 2,300 sq. ft. Notting Hill is another neighborhood with a community pool that provides both a source for recreation and a social center.

### REGENTS PARK (LB0)

This neighborhood features 27 larger custom homes and lots surrounded by lush, manicured landscaping. Most properties border the 3rd or 7th holes of the golf course. A unique feature is a one-acre park where residents can gather to enjoy cool shade under large oak and magnolia trees. Home sizes vary from 3 to 4 bedrooms on 1/3 to over 1/2 acre lots. All homes have screened lanais, with the majority featuring personal swimming pools.

### RICHMOND PARK (LB0)

With 44 single family homes, Richmond Park is close to the front entrance. Homes vary in size from 2,200 to 4,500 sq. ft. All have private pools under covered lanais. Homes are situated on Collingwood Court, a shaded cul-de-sac lined with old oaks and palms. Some homes front a large pond with many enjoying golf course views across the pond or from direct golf course frontage.

### SLOANE GARDENS (LB0)

Another tranquil and private enclave with just 16 homes built on oak-lined Sloane Gardens Court, winding through the neighborhood ending in a large cul-de-sac. Each home is its own oasis with large screened-in lanais featuring swimming pools and spas. Homes vary in size, averaging 5,000 sq. ft. Many homes have second stories overlooking the golf course and ponds.

*LM = Landscape Maintained. Under vendor contract and included in annual neighborhood assessment  
LB0 = Landscape By Owner. Maintenance is responsibility of the individual homeowners*



## ST. JAMES PARK (LBO)

At the center of University Park with 56 custom homes, this neighborhood's homes vary in size from 2,750 to more than 3,000 sq. ft. Each have large screened in lanai cages with most having personal pools. Mature landscapes at both homes and common areas provide both beauty and privacy. Lanai views vary from golf course, to water, to natural areas.

## ST. JOHN'S WOOD (LM)

One of the Park's smaller streets with just 21 homes, it's located near the north end of The Park Boulevard convenient to the back entrance off Honore. Homes are situated on a single, winding oak-lined street. Most homes enjoy either nature preserve or water views

## STANHOPE GATE (LM)

The Stanhope neighborhood features 30 luxury homes including single story, two story and courtyard designs between 2,700 to 3,800 sq. ft. All homes enjoy pond or preserve vistas serving as lanai backdrops with most featuring pools and spas. Stanhope Place is a meticulously groomed, oak tree-lined street where each home stands out with their own manicured landscape designs.

## VIRGINIA WATER (LM) [Community Pool](#)

One of the largest neighborhoods with 115 homes varying in size from 2,300 to 3,500 sq. ft., homes feature screened-in lanais with many having personal pools. The neighborhood also has a community pool and spa. Homes enjoy a variety of scenic views provided by six ponds, dense vegetation and the golf course.

## WARWICK GARDENS (LM)

Warwick has 61 custom homes on winding, tree-lined streets in the heart of University Park. All homes have large lanais with pools and average 3,200 sq. ft. or larger with views varying from the golf course, nature preserve or water.

## WENTWORTH (LM) [Community Pool](#)

Wentworth is located at the northern end of community, convenient to the back entrance. It features 49 homes and properties enjoy a variety of scenic views from ponds, natural landscapes, conservation areas and the golf course. A nature trail, including a gazebo with stunning views of sunsets, is a unique feature that leads to a neighborhood pool which is a center for social gatherings.

## WHITEBRIDGE COURT (LM) [Community Pool](#)

Located in the center of the community, Whitebridge features 49 duplex villas or 98 homes in three sizes from 1,350 to 1,750 sq. ft. with golf course, water, or nature preserve views. The second largest neighborhood, it features villas on winding oak-lined streets. A large neighborhood pool provides recreation and a social gathering area for opportunities to meet neighbors.

## WILTON CRESCENT (LM)

Wilton Crescent features 24 homes near the center of and close to the entrance to the Club and its amenities. A major neighborhood feature is a centrally located, tree-lined park with a fountain and benches. Homes vary in size between 2,100 to over 3,000 sq. ft., with 3 to 4 bedrooms and 2 to 3 baths. Many homes feature enclosed courtyards with a pool. Homeowners enjoy golf course, preserve or natural area views.

## WIMBLEDON (LBO)

One of the community's prestigious private enclaves of custom homes. Located mid-Park near the Club entrance, Wimbledon features 9 custom homes of varying sizes and architecture, all with large lanais and pools with most overlooking golf course over water views. Wimbledon is within walking distance of all of the Club's facilities.



LM = Landscape Maintained. Under vendor contract and included in annual neighborhood assessment  
LBO = Landscape By Owner. Maintenance is responsibility of the individual homeowners

# University Park

RESIDENT OWNED AND OPERATED

Beyond the stunning beauty, premiere location and quality facilities that come with home ownership in University Park, there are so many advantages accruing to owners to set this community uniquely apart from others in SW Florida.

- 32 carefully planned neighborhoods with most home settings featuring either golf course, water, or conservation area views. Lush tropical landscapes abound featuring "green" and open spaces..
- Ideal location for access to regional attractions, renowned gulf beaches, downtown attractions, theatres, restaurants, UTC indoor mall, international rowing center with flexibility to travel to and from your home from 3 international airports: SRQ, Tampa, Ft. Myers.
- Safety via state-of-the-art front and back gates with controlled access to assure privacy and peace of mind.
- An active Country Club with 27 holes of semi-private golf, pro shop with teaching staff, tennis complex with instructors, pickleball courts, fitness center, indoor/ outdoor dining, and a full social program year long. It's the recreational and social center for the community.
- Resident-governed planning and operation of the community through three entities:

**1. UPCA**I—University Park Community Association is the official HOA that oversees operations, Park access, infrastructure and maintenance. Oversight responsibility by a resident-elected Board of seven directors with a 32-seat advisory Chair Council representing all neighborhoods. The "heart-beat" of our association.

**2. PBM**—Park Boulevard Management supervises ongoing day-to-day operation of the community.

**3. UPRD**—University Park Recreation District oversees the operation of the Country Club. It was formed by a resident-backed petition to the Manatee County Board of Commissioners and the municipal-like District is operated by a resident-elected Board of five Supervisors.

- In-house managed communications tools: updated resident-friendly password protected website and bi-monthly 'UPtoDate' newsletter
- A strong financial balance sheet with substantial audited reserves defined for both the common areas and infrastructure with similar structures in each of the 32 neighborhoods reducing the possibility of special assessments.
- A thorough set of Covenants and Restrictions (CCR) designed to protect homeowner property investments and resale marketability.

## UPCAI BOARD OF DIRECTORS

Tom Christopher  
Board President  
2022 - 2023

Janette Gatesy  
Board Director  
2022-2024

Bill Lockhorn  
Board Vice President  
2022 - 2023

Peggy Lowndes  
Board Director  
2022 - 2023

Peter Conway  
Board Secretary  
2022-2024

Lars Lundholm  
Board Director  
2022 - 2024

Pat Thompson  
Board Treasurer  
2022 - 2024

## UPRD BOARD OF SUPERVISORS

Seat #1  
Vice Chairperson  
Mark Criden  
Term Expires: 2024  
[mark.criden@universityparkrd.com](mailto:mark.criden@universityparkrd.com)

Seat #2  
Assistant Secretary  
David Murphy  
Term Expires: 2026  
[david.murphy@universityparkrd.com](mailto:david.murphy@universityparkrd.com)

Seat #3  
Chairperson  
Sally Dickson  
Term Expires: 2024  
[sally.dickson@universityparkrd.com](mailto:sally.dickson@universityparkrd.com)

Seat #4  
Assistant Secretary  
Russell Piersons  
Term Expires: 2026  
[russell.piersons@universityparkrd.com](mailto:russell.piersons@universityparkrd.com)

Seat #5  
Treasurer / 2nd Vice Chairperson  
Steve Ludmerer  
Term Expires: 2024  
[steve.ludmerer@universityparkrd.com](mailto:steve.ludmerer@universityparkrd.com)



# Volunteers/Committees/Clubs



## WHAT IS THE POWER AND SPIRIT OF VOLUNTEERISM IN UNIVERSITY PARK?

Through our resident volunteers, we're grateful to have access to areas of knowledge and expertise that would otherwise be costly or inaccessible to our community management. Our board and key committees boast legal counsels, financial planners, bankers, CPA's, marketers, infrastructure specialists and small business operators and owners. The knowledge they share and advocacy they demonstrate for us makes the entire community stronger.

Our friends and neighbors give the gift of their time, exceptional knowledge, and years of experience to tackle our community challenges. Today, together with PBM Staff, they enable us to continue to lift its horizons perhaps well-beyond other local communities.

We recognize and showcase those volunteers who have contributed significantly to the welfare of the community with the ongoing induction of new members to our Volunteer Wall of Fame. The two in 2022 join 13 others who have been previously honored.

## STANDING UPCAİ COMMITTEES

Board Director (7)  
Architecture and Landscape Committee  
Ad hoc Committee(s) short or long term  
CERT  
Chair Council and Neighborhood Committee  
Election Committee  
Landscape Master Plan  
Finance Committee  
Infrastructure Committee  
Outreach Committee  
Ponds Committee

## UPCAİ MEETING SCHEDULES

Most committees are currently meeting online via Zoom. Watch your emails for the Zoom information for each meeting.

### Architecture & Landscape Committee

Fridays | 10:00 am

### Chair Council

Second Monday every month | 4:00 pm  
The Lakeside Room, in person and via Zoom

### Finance Committee

Once per quarter (day subject to change) | 3:30 pm

### Ponds Committee

First Thursday every other month | 2:00 pm

### UPCAİ Board of Directors

Third Thursday each month | 10:00 am

### Infrastructure Committee

Second Thursday each month | 2:00 pm

Governance

Volunteers/ Committees/Clubs

## UNIVERSITY PARK WOMEN'S CLUB (UPWC)

Established in 2001, UPWC is a not-for-profit independent social organization that offers year-round activities and promotes friendships and shared interests among women residents and Country Club members. UPWC is a vibrant, active organization that has grown from a first-year membership of 89 to approaching 440 members in 2023. The UPWC Board conducts four yearly luncheons (October, December, April, and June), a February Fashion Show, a Charity Event and activities that 75 volunteers plan and organize to keep its members engaged.

UPWC offers over 20 "special interest groups" and provides opportunities to improve the welfare of others through community service activities. To learn more about UPWC visit UPCAİ website and click on the Women's Club tab at the top of the landing page.  
<https://www.universityparkwomensclub.com>



# 2023 Policies: Rules of the Road

**RULES OF THE ROAD FOR NON-MOTORIZED VEHICLES** Our private roads are shared daily between cars, golf carts, bicycles, commercial vehicles, and pedestrians. Walking is a healthy activity but, to stay safe, follow these UP Rules of the Road to enjoy safer walking workouts and avoid injuries and accidents.



## PEDESTRIANS, JOGGERS AND RUNNERS

**Walk on the Sidewalk** They are there for this purpose.

**Walk Facing Traffic** If there is no sidewalk, please walk on the left curbside shoulder of the road. This is for your safety. If a driver does not see you, make sure you see them and are prepared for immediate action, if necessary.

### **Walk in Single File if there is no Sidewalk**

Walking abreast can also cause you to become distracted by conversations so that you are not paying proper attention to traffic or road signs.

**Cross Safely** Your mother was right - you should look both ways before crossing any street. Make eye contact with any drivers who may be turning. Give them a wave and make sure they see you.

**Be Visible!** Wear bright or light colors when walking in the roadway during daytime AND at night. Make yourself as visible as possible. At dawn and dusk, consider using a flashlight as the moving light is another way of increasing your visibility.

### **Stay Aware and Keep the Volume Down**

Don't drown out your environment when listening to

music with your earbuds or headphones. Keep the volume at a level where you can still hear cars, golf carts, horns and warnings from other walkers and runners. Electric cars are especially hard to hear. If you're using ear buds, wear only one so you can hear your surroundings.

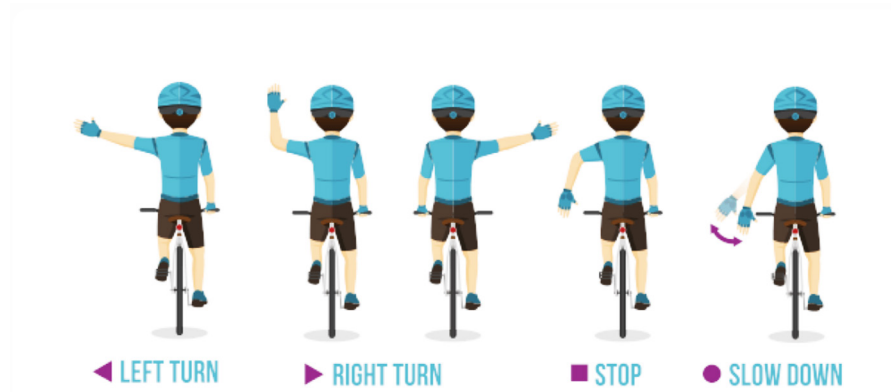
**Hang Up and Eyes Up** Distracted walking, chatting or texting on a cell phone is as dangerous as doing those things while driving. Keep it in your pocket or stop in a safe place to complete your phone tasks before moving on.

**Walk Dogs on Short Leashes** You will keep your dog safer, as well as those who pass by you, if you use proper leash walking etiquette





## Rules of the Road *continued*



### BICYCLES, TRICYCLES, EBIKES, RECUMBENT

Just like drivers behind the wheel, bicyclists and motorcyclists are encouraged to use hand signals.

**Bike Single File** Maintain six feet (6') between you and other bikers.

**Always Ride in the Direction of Traffic** On the right side of the roadway. DO NOT ride in the middle of the road.

**Move With the Traffic and Scan the Road** Try to be predictable. Wrong way riding puts you at significant risk.

**Use Extreme Caution When Making a Left Turn and Use Hand Signals** Without the benefit of flashers, you can alert cars to your next move.

**Follow all Motor Vehicle Regulations** Including stopping at STOP signs.

**Wear a Helmet!** You only have one head and only you can protect it.

**Recumbent Riders** Always use a high flag to call attention to you and your vehicle. In many cases, your recumbent bike is lower than a vehicle's side mirrors and front fender. Make sure you can be seen.

**Dress for the Ride. Be Conspicuous.** Wear bright colors! It helps motorists see you better.

### MOTOR VEHICLES INCLUDING GOLF CARTS {PERSONAL & CLUB}

**STOP!** at all Stop Signs! Don't just slide or glide the stop.

**Follow all Motor Vehicle Regulations** Including posted speed limits on The Park Boulevard - and all of our roadways.

**All Motor Vehicles Including Golf Carts Must Yield to People on Foot.** There are no exceptions!

**Golf Carts Should Stay on the Right Side of the Road.** Except when making left hand turns. Use extreme caution to check there's no vehicle behind you.

**Stay Alert!** For bikes, trikes, eBikes and people on foot.

**ALWAYS Yield to Pedestrians and use Hand Signals** Especially if you have no turn signal or lights.

#### No Children at the Wheel of a Golf Cart

University Park regulates that golf carts be operated by a licensed driver. Adult supervision is required.

# 2023 Policies: Wildlife & Donations



## UNIVERSITY PARK WILDLIFE

University Park, over our 1200 acres, is a wildlife habitat.

There are many protected species among the birds and animals here in University Park. Please DO NOT harm them!

YOU WILL FIND:

- Birds of all varieties, including birds of prey—bald eagles, osprey, hawks, and owls. Several of the birds of prey are capable of swooping down and capturing small pets that are left unattended.
- A great variety of animals—again, with predators included—foxes, coyotes, cougars, and bobcats are also present. They are very wild and can react if they feel threatened.
- There are alligators in our ponds, and they could attack pets and humans. Please DO NOT go near them because they can move quickly. They also move on the ground between ponds, especially at night. BE ALERT!
- Rattlesnakes and other poisonous snakes reside in our bushes and ponds so please avoid reaching into these areas.

Please NEVER feed our wildlife!\*

*\*Policy does not include bird feeders.*

Drive  
Slowly  
Wildlife  
Habitat



## UPCAI DONATIONS POLICY

UPCAI collects funds for common interests, to pay for maintenance and repairs. Further it maintains reserve funds to pay for future replacement of assets. Therefore, we deem it inappropriate to use any of these funds for charitable donations. The one exception is a long-standing budgeted donation to the Mayors' Feed the Hungry program during the Thanksgiving season.

UPCAI does support and encourage voluntary donations by residents to selected and vetted charities. To this end we created an Outreach Committee to help promote community giving. Information about the Outreach Committee is available on the UPCA website. [upcai-fl.com](http://upcai-fl.com)

Various national and local charities (Red Cross, Firefighters, others) solicit directly to residents. We take no position on these efforts. Most importantly we do not offer any opinion of their validity.

*This policy applies only to  
The University Park Community Association*







**University Park  
Country Club:**

Administration  
The Varsity Club  
The Park Grille  
Golf Pro Shop  
Golf Course  
Tennis + Fitness  
Tennis Pro Shop  
Tennis Courts  
Pickleball Courts  
Croquet



**UPCAI  
BUSINESS  
OFFICES**



Map

# University Park Country Club



**University Park Country Club** is a gated Florida community in a premier location, just west of Exit 213 off I-75 near Sarasota. This lifestyle and social center of the Park offers members world-class golf, tennis, pickleball, fitness, croquet, card and game groups, dining and social programs. Our mission is to deliver ever evolving lifestyle experiences that are engaging and inclusive by providing exemplary service, facilities and amenities.

## **GOLF**

Voted 2023 *Best Golf Course* by Sarasota Magazine. Our 27-hole championship golf course, designed by world-renowned golf course architect Ron Garl, is consistently ranked one of the top courses in Florida. With six sets of tees, you can navigate the course using our Textron GPS system. We also offer a large practice area including two putting greens, a driving range and short game practice area. The Golf Academy provides professional instruction with programs for beginners just starting out to seasoned golfers who are looking to improve their scores. The full-service golf pro shop provides an extensive selection of merchandise and equipment, along with club repair and re-gripping. Enjoy the social and competitive aspects of golf by joining the Ladies 18-hole Golf Association, which plays Tuesday mornings, the Men's Golf Association on Wednesday mornings, the Ladies 9-hole Golf Association on Thursday mornings and our Sunday Funday group.

## **TENNIS & PICKLEBALL**

Voted 2023 *Best Place to Play Pickleball* by Sarasota Magazine. Our tennis facility boasts eleven lighted har-tru courts, monthly tennis mixers, expert instruction and a lush, natural lakeside setting. Our tennis pros have coached some of the best players in the world and take great pride in helping our members reach their full potential on and off the court. Also included in our racquets program are four newly constructed pickleball courts and accompanying programs.

## **FITNESS**

The 3,000 square foot Fitness Centre includes a full array of state-of-the-art weight machines and cardiovascular equipment to keep you in peak condition. Let us help you achieve your goals, whether becoming more proficient at your game or aiming to be stronger, fitter

and healthier. Learn how to exercise to prevent or manage many common chronic health conditions, as well as adapt your program where needed, to maintain functionality and strength. Our personal trainers and a full complement of fitness classes complete the total fitness experience at University Park Country Club.

## **SOCIAL ACTIVITIES**

Croquet on a newly relocated green and various card and game groups allow for enhanced social opportunities for all members.

## **DINING AND MEMBER EVENTS**

In addition to our award winning recreational facilities, we offer a myriad of social activities and member events. Open seven days a week, The Park Grille & Café features dramatic lakeside dining with views of both the 9th and 18th greens and outdoor al fresco dining. Our Executive Chef brings creativity and innovation to our menus and special events.





To obtain more information about these membership opportunities, please contact Ann Backus, Membership Director at 941-355-3888, ext. 234 or email [abackus@universitypark-fl.com](mailto:abackus@universitypark-fl.com).



## ADDITIONAL INFORMATION

- Payment of initiation fee, dues, capital dues and application fee is due at the time of application for all new memberships. Annual dues, capital dues and passes are prorated based on the calendar year. Dues, fees and charges may change without notice and are subject to a 7% state sales tax. The initiation fee and capital dues are allocated to reserves for capital improvement projects and are not taxable.
- An annual food and beverage minimum spending requirement applies to all membership categories - \$450 annually for a single membership, \$900 for a family membership or those with a spouse/partner and accompanying Social Access Pass. All food and beverage purchases including à la carte dining, alcoholic beverages, beverage cart, takeout and member events (not including tax and gratuity) will apply to your minimum balance due if billed to your member account. The commitment is prorated based on the calendar year.
- All new annual memberships are subject to a \$150 plus tax application fee.
- Memberships are available to residents and non-residents of University Park. All new home owners in University Park are required to purchase and sustain a membership. This purchase should take place at least two weeks prior to the date of home closing.
- All memberships are on an annual basis even if the monthly dues option is selected. They may be upgraded at any time but cannot be downgraded or suspended mid-year.
- All members may make arrangements for golf lessons and schools, tennis lessons and personal training, but may only utilize those facilities during the time the lesson is taking place or as allowed by their membership category. Guests may utilize the facilities on a limited basis according to the membership category of the accompanying member.

■ A Family membership includes you, your spouse, partner or significant other living in the same residence, and any children under 23 living at home, attending school or in the military. Single Dues are designed specifically for unmarried individuals, living alone. A family membership or associated Social Access Pass would be required if not single.

■ We also typically offer one-time 30, 60 or 90 day Trial Memberships and Summer Memberships. Please contact Ann Backus for more information on these exciting membership opportunities.

*Subject to the Bylaws and the Rules and Regulations of the Club*

## UPCC CONTACTS

M-F | 8:30AM-5PM  
941.355.3888  
Reception | x221  
7671 The Park Boulevard  
University Park, FL 34201  
[universitypark-fl.com](http://universitypark-fl.com)

John Fetsick  
General Manager  
941.355.3888 x226  
[jfetsick@universitypark-fl.com](mailto:jfetsick@universitypark-fl.com)

Curtis Nickerson  
Deputy General Manager/  
Director of Property & Facilities  
941.355.3888 x249  
[cnickerson@universitypark-fl.com](mailto:cnickerson@universitypark-fl.com)

Rico Alcala  
Director of Member Experience  
941.355.3888 x257  
[ralcala@universitypark-fl.com](mailto:ralcala@universitypark-fl.com)

Ashley Hayden  
Head Golf Professional  
941.355.3888 x239  
[ahayden@universitypark-fl.com](mailto:ahayden@universitypark-fl.com)

Lee Salvino-Nakamura  
Racquets Director  
941.355.3888 x237  
[lsalvino-nakamura@universitypark-fl.com](mailto:lsalvino-nakamura@universitypark-fl.com)

Ann Backus  
Membership Director  
941.355.3888 x234  
[abackus@universitypark-fl.com](mailto:abackus@universitypark-fl.com)

live.dine.play.







## Golf

- Year-round, unlimited use of the golf course paying only an annual trail fee or cart fee for 18 or 9 holes
- Use of all golf practices facilities
- Golf tee times requests up to 14 days in advance using the automated Chelsea tee time reservation system
- Special golf rates for accompanied guests, six times per calendar year per guest. A guest may also be in a prebooked tee time request six times per calendar year.
- Opportunity to join our 18-hole or 9-hole Ladies Golf Associations or our Men's Golf Association
- Summer reciprocal golf privileges at over 20 other area clubs
- Your children under 16 years of age on a Family membership may golf for free after 12 noon Nov 1–Apr 30 and at any time May 1–Oct 31 when accompanied by the adult member
- Discount on select golf and tennis pro shop merchandise
- Walking is permitted May–December after 2 pm for no cart fee.
- Assignability of membership to tenants or guests

## Racquets

- Unlimited use of the tennis and pickleball courts for no charge and reservation requests up to 14 days in advance and bookings up to 7 days in advance
- Use of the Fitness Centre, including fitness classes for a fee

## Social

- All dining, member events and social functions, including weekly card and game groups
- Croquet on one of the finest greenswards in the area

### GOLF PRO SHOP

Open 7 Days a Week  
7:00 AM - 5:30 PM  
Tee Times | 941.359.9999  
Pro Shop | 941.355.3888

### TENNIS PRO SHOP

M-F | 7:30 AM - 3:30 PM  
S-S | 7:30 AM - 12:00 NOON  
Keyless Entry | 5:00AM - 11:30PM  
941.359.8888  
tennis@universitypark-fl.com

### PICKLEBALL

941.359.8888

### FITNESS CENTRE

M-F | 7:30 AM - 3:30 PM  
S-S | 7:30 AM - 12:00 NOON  
Keyless Entry | 5:00AM - 11:30PM  
941.359.8888  
tennis@universitypark-fl.com

### THE PARK GRILLE & COURTYARD CAFÉ

941.355.8888 x247  
To Go | x246



## FULL MEMBERSHIP *continued*

### 2023 Full Membership Dues and Fees

Full Initiation Fee	(one time, non-refundable)
UP Homeowner	\$10,000
Non-Resident/Tenant	\$12,500
Application Fee	\$150 (one time, non-refundable, 7% sales tax)

Dues	Annual Dues (plus 7% sales tax)		and Capital Dues
	Annually	Monthly	Annually or Monthly
UP Homeowner-Single	\$7,200	\$633	5% of dues & passes
UP Homeowner-Family	\$9,500	\$833	5% of dues & passes
Non-Resident/Tenant-Single	\$7,200	\$633	10% of dues & passes
Non-Resident/Tenant-Family	\$9,500	\$833	10% of dues & passes

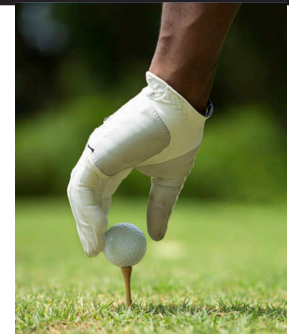
Social Access Pass for non-golfing Spouse/Partner	Annually- \$500	Monthly-\$45
--	-----------------	--------------

Full Member Cart Fees	\$23/member for 18 holes	\$13/member for 9 holes
or		
Full Member Trail Fees		
Single Resident Member Trail Fee with Private Cart	Annually-\$1600	Monthly-\$140
Family Resident Member Trail Fee with Private Cart	Annually-\$2000	Monthly-\$175

*Trail fee not available for non-residents*

Food & Beverage Minimum	
Single	Annually-\$450
Family (for those with a Spouse/Partner)	Annually-\$900

Miscellaneous Optional Fees (per person)	
Annual Fitness Pass for non-golfing Spouse/Partner	Annually-\$300
Locker Rental Fee	Annually-\$100
Bag Storage Fee	Annually-\$120
GHIN Handicap Fee	Annually-\$30
Pickleball & Tennis Ball Machine Rental	\$15 per hour or \$200/year Family \$150/year Single



#### Guest Fees

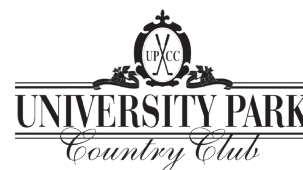
ACCOMPANIED GUESTS pay the guest fee for golf (each guest is limited to 6 times per calendar year in a Chelsea booked tee time and at the guest rate)

RANGE GUEST \$20

TENNIS/PICKLEBALL COURT FEE  
\$15 per court session/guest (limit of 4 times per guest)

FITNESS CENTRE FEE  
\$10 per day per guest (limit of 4 times per guest)

# Racquets



- Year-round unlimited use of the 11 lighted hard tennis courts at no charge and participation with tennis teams, clinics, socials and camps
- Use of the 4 pickleball courts at no charge
- Tennis and pickleball reservation requests up to 14 days in advance and bookings up to 7 days in advance
- Use of the Fitness Centre, including fitness classes for a fee
- Discount on select golf and tennis pro shop merchandise
- Golf rounds at the guest rate with tee times up to 5 days in advance by calling the golf pro shop  
Limit of six times per calendar year in tee times booked more than 5 days in advance by a Full member
- Croquet on one of the finest regulation greenswards in the area
- All dining, member events and social functions, including weekly card and game groups

## 2023 Racquets Membership Dues and Fees

<b>Racquets Initiation Fee</b>	<i>(one time, non-refundable)</i>
UP Homeowner	\$2,500
Non-Resident/Tenant	\$3,000
<b>Application Fee</b>	\$150 <i>(one time, non-refundable, 7% sales tax)</i>

<b>Dues</b>	<b>Annual Dues <i>(plus 7% sales tax)</i></b>		<b>and Capital Dues</b>
	Annually	Monthly	Annually or Monthly
UP Homeowner-Single	\$3,075	\$272	5% of dues & passes
UP Homeowner-Family	\$4,100	\$358	5% of dues & passes
Non-Resident/Tenant-Single	\$3,075	\$272	10% of dues & passes
Non-Resident/Tenant-Family	\$4,100	\$358	10% of dues & passes

<b>Social Access Pass</b> <i>(for non-racquets Spouse/Partner)</i>	Annually- \$500	Monthly-\$45
---	-----------------	--------------

<b>Food &amp; Beverage Minimum</b>	
Single	Annually-\$450
Family <i>(for those with a Spouse/Partner)</i>	Annually-\$900

<b>Miscellaneous Optional Fees <i>(per person)</i></b>	
Annual Fitness Pass <i>for non-racquets Spouse/Partner</i>	Annually-\$500
Golf Locker Rental Fee	Annually-\$100
GHIN Handicap Fee	Annually-\$30
Players Golf Card	\$950/ten 18-hole rounds, \$600/ten 9-hole rounds
Annual Driving Range Pass	Annually-\$300 (\$20/guest of a pass-holder)
Pickleball & Tennis Ball Machine Rental	\$15 per hour or \$200/year Family--both machines \$150/year Single--both machines

### Guest Fees

GOLF at the currently advertised open rate

TENNIS/PICKLEBALL COURT FEE  
\$15 per court session per guest  
(limit of 4 times/guest)

FITNESS CENTRE FEE  
\$10 per day per guest  
(limit of 4 times/guest)



# Social or Resident



- All dining, member events and social functions, including weekly card and game groups
- Croquet on one of the finest regulation greenswards in the area
- Golf rounds at the open rate with tee times up to 5 days in advance by calling the golf pro shop.  
Limit of six times per calendar year in tee times booked more than 5 days in advance by a Full member.
- Discount on select golf and tennis pro shop merchandise
- Fitness classes for a \$15 fee (\$10 for those with an Annual Fitness Pass), on a limited basis according to class size.  
Does not include the use of the cardio and weight room.

## 2023 Social Dues and Fees

<b>Social Initiation Fee</b>	<i>(one time, non-refundable)</i>
UP Homeowner	\$1,500
Non-Resident/Tenant	\$2,000
<b>Application Fee</b>	\$150 <i>(one time, non-refundable, 7% sales tax)</i>

<b>Dues</b>	<b>Annual Dues</b> <i>(plus 7% sales tax)</i>	<b>and Capital Dues</b>
	Annually	Annually or Monthly
UP Homeowner-Single	\$775	5% of dues & passes
UP Homeowner-Family	\$1,025	5% of dues & passes
Non-Resident/Tenant-Single	\$775	10% of dues & passes
Non-Resident/Tenant-Family	\$1,025	10% of dues & passes

<b>Food &amp; Beverage Minimum</b>	
Single	Annually-\$450
Family <i>(for those with a Spouse/Partner)</i>	Annually-\$900

<b>Miscellaneous Optional Fees</b> <i>(per person)</i>	
Annual Fitness Pass	Annually-\$500
Annual Pickleball Pass	Annually-\$750
Annual Twilight Tennis Pass	Annually-\$750 for tennis after 12 noon, no league/interclub play
Golf Locker Rental Fee	Annually-\$100
GHIN Handicap Fee	Annually-\$30
Players Golf Card	\$950/ten 18-hole rounds, \$600/ten 9-hole rounds
Annual Driving Range Pass	Annually-\$450 (\$20/guest of a pass-holder)
Pickleball & Tennis Ball Machine Rental	\$15 per hour or \$200/year Family--both machines \$150/year Single--both machines <i>(available to Social Members with the corresponding Annual Passes)</i>

### Guest Fees

GOLF at the currently advertised open rate

### TENNIS/PICKLEBALL COURT FEE

\$15 per court session per guest *if you have the corresponding Annual Pass*  
(limit of 4 times/guest)

### FITNESS CENTRE FEE

\$10 per day per guest *if you have the corresponding Annual Pass*  
(limit of 4 times/guest)

# Trial



## TRIAL FULL

Enjoy unlimited access to all of the award-winning facilities at University Park Country Club. Immerse yourself in the country club lifestyle at University Park at all of our special member and holiday events, select golf and tennis tournaments and dining at the award-winning Park Grille & Café.

- 27 Holes of championship golf with tee times requests up to 10 days in advance, driving range and practice area
- Golf cart fee of \$25 plus tax per person per 18 holes or \$15 plus tax for 9 holes applies
- Trial Full members have the opportunity to join our 18-hole Ladies Golf Association (Tuesday mornings), 9-hole Ladies Golf Associations (Thursday mornings) or our Men's Golf Association (Wednesday mornings)
- Discount on select golf and tennis pro shop merchandise
- Unlimited use of the 11 lighted har-tru tennis courts with advance reservation requests up to 7 days in advance
- Use of the 4 pickleball courts
- Use of the Fitness Centre, including fitness classes for a fee
- All dining, member events and social functions, including weekly card and game groups
- Croquet on one of the finest regulation greenswards in the area

### 2023 Trial Full Membership Dues are payable in advance (plus tax)

Time Period	Family Membership	Single Membership	Application Fee
<b>30 Days</b>	\$1,350	\$1,025	\$100 plus 7% sales tax
<b>60 Days</b>	\$2,425	\$1,825	\$100 plus 7% sales tax
<b>90 Days</b>	\$3,250	\$2,475	\$100 plus 7% sales tax

#### Guest Fees

GOLF: at the currently advertised open rate

TENNIS/PICKLEBALL COURT FEE: \$15 per court session per guest (limit of 4 times/guest)

FITNESS CENTRE FEE: \$10 per day per guest (limit of 2 times/guest)

## TRIAL RACQUETS+FITNESS

- Unlimited use of the 11 lighted har-tru tennis courts with advance reservation requests up to 7 days in advance
- Use of the 4 pickleball courts
- Use of the Fitness Centre, including fitness classes for a fee
- Discount on select golf and tennis pro shop merchandise
- Croquet on one of the finest regulation greenswards in the area
- Play golf at the open rate with 5 days advance tee times. Guests are welcome when accompanied by a member and pay the open rate for golf.
- All dining, member events and social functions, including weekly card and game groups

### 2023 Trial Racquets+Fitness Dues are payable in advance (plus tax)

Time Period	Family Membership	Single Membership	Application Fee
<b>30 Days</b>	\$575	\$450	\$100 plus 7% sales tax
<b>60 Days</b>	\$1,050	\$800	\$100 plus 7% sales tax
<b>90 Days</b>	\$1,400	\$1,075	\$100 plus 7% sales tax

## TRIAL MEMBERSHIPS *continued*

### TRIAL FITNESS/SOCIAL

- All dining, member events and social functions, including weekly card and game groups
- Use of the Fitness Centre, including fitness classes for a fee
- Croquet on one of the finest regulation greenswards in the area
- Play golf at the open rate with 5 days advance tee times

#### 2023 Trial Fitness/Social *Dues are payable in advance (plus tax)*

Time Period	Family Membership	Single Membership	Application Fee
30 Days	\$250	\$150	\$100 plus 7% sales tax
60 Days	\$450	\$275	\$100 plus 7% sales tax
90 Days	\$600	\$380	\$100 plus 7% sales tax

### TRIAL SOCIAL

- All dining, member events and social functions, including weekly card and game groups
- Croquet on one of the finest regulation greenswards in the area
- Play golf at the open rate with 5 days advance tee times

#### 2023 Trial Fitness/Social *Dues are payable in advance (plus tax)*

Time Period	Family Membership	Single Membership	Application Fee
30 Days	\$125	\$100	\$100 plus 7% sales tax
60 Days	\$225	\$175	\$100 plus 7% sales tax
90 Days	\$300	\$250	\$100 plus 7% sales tax

## ALL TRIAL MEMBERSHIPS

A food and beverage minimum spending requirement applies to all membership categories. All food and beverage purchases including alcohol charged to your member account apply. This includes all lunch and dinner charges, beverage cart, carry out, member and holiday events and private parties.

Food & Beverage Minimum	
30 Days	\$100 over the 30 day period
60 Days	\$200 over the 60 day period
90 Days	\$300 over the 90 day period

**MEMBER CHARGES** A membership account secured by a major credit card will be opened for your convenience. All food and beverage charges must be charged to the member account to apply to the food and beverage minimum. Membership account balances will be automatically charged to the credit card on or about the 3rd of every month. A copy of your statement and credit card receipt will be mailed to you. Trial Memberships are a one time only opportunity available to both residents and non-residents and may not be extended or renewed after the initial trial period. Eligibility requirements may apply.



# Golf Academy

GOLF SCHOOLS | LESSONS | CLINICS | PRIVATE INSTRUCTION

GOLF PRO SHOP 941.359.9999 x259



Let our golf professionals help you sharpen your skills and get the most out of your game. Private instruction gives you one-on-one personal attention where you can focus on specific aspects of your game. Broaden your knowledge of golf in a group setting at any one of our innovative programs including 2 and 3 day Golf Schools, Daily Clinics and Camps.

University Park Country Club is one of the best courses in the state of Florida. Golf instruction takes place at our world-class practice facility which includes an expansive driving range, two putting greens, a practice bunker and chipping area.

## GOLF SERIES

### GET GOLF READY 1.0

**\$150 per person | 5 week series | 60 minute classes**

Designed for the new golfer or anyone who wants to be reintroduced. All aspects of the game will be covered from putting to on-course instruction. Build a strong foundation for your future in the game of golf. Golf clubs provided if you need them. Bring yourself and a willingness to learn.



2022 SERIES	OCT 31, NOV 7, 14, 21, 28	(4:00-5:00 PM)	MONDAY
2023 SERIES	JAN 9, 16, 23, 30, FEB 6	(4:00-5:00 PM)	MONDAY
2023 SERIES	JAN 24, 31, FEB 7, 14, 21	(4:00-5:00 PM)	TUESDAY

### GET GOLF READY 2.0

**\$150 per person | 5 week series | 60 minute classes**

Designed for the golfer who has already completed the first Get Golf Ready 1.0 class or for intermediate players. All aspects of the game are covered in more detail. Continue to learn the game of golf in a fun, group atmosphere.



2022 SERIES	DEC 5, 12, 19, JAN 2, 9	(4:00-5:00 PM)	MONDAY
2023 SERIES	FEB 13, 20, 27, MAR 6, 13	(4:00-5:00 PM)	MONDAY
2023 SERIES	MAR 28, APR 4, 11, 18, 25	(4:00-5:00 PM)	TUESDAY

## GOLF SCHOOLS

### 3-DAY, TOTAL GOLF SCHOOL

**MONDAY - WEDNESDAY** (3 consecutive mornings)

**\$379 PER STUDENT** (\$100 deposit required)

This school covers your entire game at an ideal pace to foster learning, development, practice and retention. Refine the mechanics of your swing, short game, pitching, putting, green reading, chipping, bunker play and skills improvement. All students receive individual video swing instruction and analysis.

2022 SERIES	NOV 14-16, DEC 5-7	(9:00-11:00 AM)
2023 SERIES	JAN 9-11, JAN 30-FEB 1, FEB 13-15 FEB 27-MAR 1, MAR 13-15	(9:00-11:00 AM)

### 2-DAY, SHORT GAME GOLF SCHOOL

**MONDAY - TUESDAY** (2 consecutive mornings)

**\$279 PER STUDENT** (\$100 deposit required)

Sharpen your scoring shots to lower your scores! Master your putting, chipping, pitching, bunker and lob shot skills in two short mornings.

2022 SERIES	NOV 21-22, DEC 12-13	(9:00-11:00 AM)
2023 SERIES	JAN 2-3, JAN 16-17, FEB 6-7 FEB 20-21, MAR 6-7, APR 3-4	(9:00-11:00 AM)

### 1-DAY, QUICK VISIT GOLF SCHOOL

**MONDAYS | \$219 per student** (\$100 deposit required)

**2 person minimum**

One morning to do it all! Quick review and practice in both full swing and short game methods. Get ready for a jam-packed session on our practice facilities.

2022 SCHOOLS	NOV 28, DEC 19	(9:00-12:00 PM)
2023 SCHOOLS	JAN 2, 23, FEB 13, MAR 27	(9:00-12:00 PM)

### PRIVATE INSTRUCTION | 3 AND 2-DAY GOLF SCHOOLS

Minimum 3 players. For more information: 941.359.9999 x 259

**1/2-Hour Lesson** \$60 (Set of 6 lessons - \$300)

**1-Hour Lesson** \$100 (add a friend for just \$20)

**1-Hour Playing Lesson** (after 3 PM) \$100

**9-Hole Playing Lesson** (after 3 PM) \$200

**Junior Lessons** (14 & under) 1/2 hr \$50 | 1-Hour \$90



## GOLF ACADEMY *continued*

### GOLF CLINICS

#### MEN'S & LADIES' WEEKLY GOLF CLINICS

**\$30 per person/per clinic | 10:00–11:00 AM**

**Men every Tuesday | Ladies every Wednesday**

Daily topics vary by clinic and include putting, chipping, irons, driver/hybrids, bunker play and specialty shots. Call the pro shop for the class theme. Max per class 10 students on a first come, first serve basis. (*year round*)

#### SATURDAY MORNING DROP-IN CLINICS

**\$30 per person | 10:00–11:00 AM**

All golfers are welcome for an hour of practice. Included are one short game topic and one full swing topic. Sign up in the Golf Pro Shop or just "drop-in". (*year round*)



### JUNIOR GOLF CAMPS

#### SUMMER JUNIOR GOLF CAMPS

**\$159 per student | 9:00–11:00 AM**

A three day camp with golf instruction, games and much more. Snacks, drinks, daily prizes and lunch are included.

**2023 CAMPS** JUNE 5-7, JULY 10-12

### Our Golf Pros



#### ASHLEY HAYDEN Head Golf Professional

Originally from London, England, Ashley has been a PGA class A member since 1996 at University Park Country Club. Ashley oversees all aspects of our golf operation and is actively involved in The Golf Academy and golf instruction program. He enjoys teaching all skill levels and believes much can be gained from a small investment in time at the tees.



#### MIKE FARRER PGA Golf Professional

Mike has been a PGA member for 25 years and has been teaching golf for 29 years. A former golf course owner, Mike moved to Florida a short 3 years ago. His teaching philosophy is *keep it simple, keep it fun!*, and guarantees you will be happy with your lesson or you don't pay!



#### CORY WILLIAMSON PGA Golf Professional

Cory came to University Park Country Club with a wealth of experience from TPC Prestancia, as the Head Golf Professional at Plantation Golf and Country Club, time spent at Jacaranda West Country Club and La Paloma Country Club in Tuscon. Cory is a Certified Club Fitter for Titleist®, Callaway® and TaylorMade®, Certified Master Fitter for Callaway®.

#### GOLF PRO SHOP

Open 7 Days a Week

7:00AM–5:30PM

Tee Times | 941.359.9999

Pro Shop | 941.355.3888

# Racquets

LESSONS | CLINICS | PRIVATE INSTRUCTION

TENNIS PRO SHOP 941.359.8888 x259



Tennis members enjoy 11 lighted Har-Tru courts surrounded by lush landscaping. Voted *Best Tennis Courts* by Tennis Industry Magazine and *Best of the Best Places to Play Tennis* by Sarasota Magazine, our tennis facility is one of the best in the area.

USPTA certified instructors offer an array of tennis clinics, adult mini camps, private instruction, team tennis coaching and kid's camps. Our pros have worked with some the best players in the world and take great pride in helping our members reach their full potential on and off the court. Stop by or call the Tennis Pro Shop to sign up or speak with Lee or Ryan!

## INDIVIDUAL TENNIS INSTRUCTION

For more information: 941.359.8888 x 259

<b>1/2-Hour Lesson</b> – members or non-member	\$45
<b>1-Hour Lesson</b> – member or non-member	\$80
<b>1-Hour Clinics</b> – member semi private	\$45
<b>1-Hour Clinics</b> – 3 members	\$33/pp
<b>1-Hour Clinics</b> – 4 or more members	\$25/pp
<b>90 minute camps</b> – 4 or more members	\$37.50/pp

## TENNIS PRO SHOP

### RACQUET RESTRINGING

Synthetic Gut	\$37
Multifilament	\$37
Polyester, Hybrid Stringing	\$41
Wilson NXT	\$43

### BALL MACHINE RENTAL & PACKAGES | \$15 PER HOUR

Our ball machine is wireless, remote controlled, and can hold up to 300 balls. Programmable to vary topspin and backspin, 7 directions with random option. Ball machine rental appointments must be made in advance by calling the tennis pro shop at 941-359-8888.

#### Annual Contracts

<b>Family Membership</b>	\$200
<b>Single Membership</b>	\$150
<b>Summer Membership</b>	\$100 (May-October)

## Our Racquet Pros



### LEE SALVINO-NAKAMURA Director of Racquets

Lee brings a wealth of knowledge and 30+ years of experience to UPCC. She was a top nationally ranked junior who went onto play D1 Tennis before embarking on her extensive coaching career.

Lee is a USPTA and USPTR certified Coach and is a lifetime USTA member. She has taught in a wide array of tennis platforms that include IMG Academy, Lakewood Ranch Country Club, Saddlebrook Resort and Tennis Australia in Melbourne, Australia (The home of the Australian Open.) Lee's passion and dedication to the sport grows deeper each day. [Lsalvino-nakamura@universitypark-fl.com](mailto:Lsalvino-nakamura@universitypark-fl.com)



### RYAN HAMNING USPTA Head Pro

Ryan grew up in Cincinnati, Ohio and played Division I college tennis at Cleveland State University. While at Cleveland State, Ryan played 2 and 3 singles and was ranked top 70 in country in doubles. His team qualified for the Division I National Championship 3 times. Following college Ryan played professional tennis on the USTA Pro circuit achieving a top 200 National ranking.

Ryan has been coaching for 10 years. At the junior level Ryan has coached multiple future college players and was the hitting partner for Australian Open champion Sofia Kenin. At the adult level Ryan has coached multiple USTA adult teams to district and sectional championships.



# TENNIS CLINICS

## LADIES 4.0 TEAM CLINIC

MONDAY 8:00AM–9:00AM

\$25 PER PERSON | 8 MAX PER CLINIC

This clinic will focus on stroke production, positioning, match strategy, and point play. Join as your schedule permits. This clinic is open to those currently are on or interested in team play at the 4.0 level.

## LADIES 3.0 CLINICS

MONDAY 9:00AM–10:00AM

FRIDAY 10:00AM–11:00AM

\$25 PER PERSON | 6 MAX PER CLINIC

This is our weekly drop in clinic that is open to ladies of all ladies at a beginner or 3.0 level. We will focus on stroke production, positioning, and strategy.

## STROKE OF THE WEEK

WEDNESDAY 8:00AM–9:00AM

\$25 PER PERSON | 6 MAX PER CLINIC

This is our weekly drop-in clinic that is open to men of all levels. We will focus on stroke production, doubles, and singles play. This is a great clinic to get some help with technique, get back into the game, or to get extra repetitions of specific shots.

## MEN'S OPEN DOUBLES CLINIC

FRIDAY 8:00AM–9:00AM

\$25 PER PERSON | 8 MAX PER CLINIC

This is our weekly drop in clinic that is open to men of all levels. We will focus on stroke production, positioning, match strategy, and point play. Join as your schedule permits.

## LADIES 3.0 TEAM CLINIC

FRIDAY 8:00AM–9:00AM

\$25 PER PERSON | 8 MAX PER CLINIC

This is our weekly drop in clinic will focus on stroke production, positioning, match strategy, and point play. Join as your schedule permits. This clinic is open to those currently are on or interested in team play at the 3.0 level.

## LADIES 3.5 OPEN CLINIC

FRIDAY 11:00AM–12:00PM

\$25 PER PERSON | 8 MAX PER CLINIC

These are our weekly drop-in clinic that is open to ladies at the 3.5 level. We will focus on stroke production, positioning, match strategy, and point play. Join as your schedule permits.

## MEN'S ADVANCE DOUBLES CLINIC

FRIDAY 12:00PM–1:00PM

\$25 PER PERSON | 8 MAX PER CLINIC

This clinic is designed for those male players who are looking for advanced doubles strategy and can consistently keep the ball in play with pace. You will learn how to attach and defend the court better, while creating free, easy points.



## Our Racquet Pros



### LANCE MARTIN Head Pickleball Professional & Racquets League Coordinator

Lance Martin joined UPCC in August 2023. He is a USPPR coach and an avid pickleball player. Lance was an elementary school teacher in Manatee County before becoming the events and programming

coordinator for Lakewood Ranch Tennis Center.

Prior to UPCC, he worked with the USTA League program as a district and section league coordinator then accepted a position in Northern Virginia as the director of pickleball at Pickleballerz in Chantilly, Virginia.

Lance traveled from Virginia in 2022 to become the Assistant General Manager at The Pickleball Club in Sarasota. Welcome Lance!

## PICKLEBALL

Voted *Best Place to Play Pickleball* by Sarasota Magazine.

Enjoy Pickleball on our 4, state-of-the-art pickleball courts.

We offer play reservations, private lessons, group lessons, and ball machine reservations. Book a court or book a lesson with one of our PTR Certified Pickleball Pros and get involved in the game today!

### ADVANCED PICKLEBALL CLASSES

MONDAY 11:00AM–12:00PM

\$25 PER PERSON | 6 MAX

This clinic is designed to take intermediated pickleball players to the next level. Players will learn when to correctly use the dinks, drives, advanced serves, lobs and smashes.

### BEGINNER + INTERMEDIATE PICKLEBALL CLASSES

TUESDAY 11:30AM–12:30 PM

WEDNESDAY 11:30AM–12:30 PM

THURSDAY 11:30AM–12:30 PM

\$25 PER PERSON | 10 MAX

This clinic is designed to teach you all the basics of pickleball, including scoring. After just a few of these clinics you will be able to serve and play in any of our drop-in beginner pickleball groups.

### PICKLEBALL MEMBERSHIP

\$750 per person if social member.

Golf and Racquets membership include Pickleball.

# Fitness

FITNESS CLASSES | PERSONAL TRAINING

FITNESS CENTRE 941.359.8888 x000



## Our Fitness Pro

Fitness and wellness take center stage at University Park Country Club. Our fully staffed, Fitness Centre features a full array of weight machines and cardiovascular equipment to keep you in peak condition. Personal trainers and a full complement of classes complete the total fitness experience at University Park Country Club.

We offer a full schedule of fitness classes, access to the most updated online schedule and registration through Chelsea.



### SUE MARILLIER AFAA Certified Personal Trainer

Sue brings her love for fitness and expansive knowledge of the health and fitness industry to members at University Park Country Club. Sue is an AFAA Certified Personal Trainer and Group Fitness Instructor. She is certified in a vast array of modalities and group classes including Active Isolated Stretch, Silver Sneakers and Parkinson's specific training and more. Growing up in South Africa, she now loves living and teaching fitness class in the United States. Sue is available for personal training.

#### Certifications:



ACE Personal Trainer



ACE Group Fitness Instructor



NASM: Golf Fitness Exercise Specialist

NASM: Corrective Exercise Specialist



## CHELSEA LOGIN



**Class sizes are limited. Advanced sign-up is required. Use your member Chelsea Login to register for Group Fitness and Aqua Aerobics Pool classes.**

**For the most updated group fitness schedule & class descriptions:** [universitypark-fl.com](http://universitypark-fl.com)

### PERSONAL TRAINING FEES

To schedule a personal training session today:  
941.359.8888, x238

1-Hour Private Session	\$80
Half-Hour Private Session	\$45
Semi-private 1 Hour Session	\$45/pp
Semi-private Half Hour Session	\$22/pp
Three Person 1 Hour Session	\$33/pp
Four+ Person Session	\$25/pp

# Weddings & Events

WEDDING PLANNING | CORPORATE EVENTS

BIRTHDAYS | ANNIVERSARIES | CELEBRATION OF LIFE



## A wink at tradition. A nod to modern.

University Park is a hidden gem with dazzling view both day and night, University Park Country Club is one of Sarasota's premier locations for weddings and private celebrations. The Park Grille & Lakeside Room with its coastal modern flair, is surrounded by the natural beauty of shimmering lakes, lush green backgrounds and a golf course view. Culinary creations, impeccable service and breathtaking views will make your event simply unforgettable.

### ***Do you need to be a member of University Park Country Club to host an event?***

Membership at University Park Country Club is not required to host a wedding, private party or corporate event.

### ***Do you have a location to hold our ceremony?***

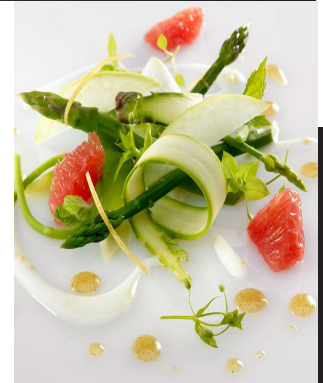
Wedding ceremonies are held on a grassy knoll with expansive views of the lake and golf course. We can accommodate other types of ceremonies inside the Lakeside Room.

### ***What is the largest guest list you can accommodate?***

The Club can accommodate up to 200 guests for a seated dinner and 150 guests for a buffet. Corporate events can range anywhere from 50-150 guests. We are happy to customize your menu to suit your individual taste and budget.

- Come tour the club, experience our splendor, and share with us your dreams for your special day. Many amenities are included in the cost of your event.
- Members are always invited to take advantage of home entertaining options from our culinary staff.

To obtain more information about booking your event, please contact Karen McGaha, Banquet & Catering Manager. 941.355.3888, x222, [kmcgaha@universitypark-fl.com](mailto:kmcgaha@universitypark-fl.com).







# PBM Community Association Team

## UPCAI Business Offices

M-F | 9AM-4PM  
941.355.3888  
8301 The Park Boulevard  
University Park, FL 34201  
[www.upcai-fl.com](http://www.upcai-fl.com)

We are on the right  
before the Gatehouse!



Gate Access Control Manager  
941.355.3888 x256

dwellingLIVE  
<https://community.dwellinglive.com/universitypark.aspx>

UP to DATE Newsletter  
<https://upcai-fl.com/lifestyle/>

### **Patrick Bell**

*Landscape Manager*  
941-355-3888 x194  
[pbell@upcai-fl.com](mailto:pbell@upcai-fl.com)  
All landscaping and ponds-related concerns including "wildlife alerts"

### **Jennifer Everingham**

*Assistant Board Secretary/  
Neighborhood Liaison*  
941-355-3888 x233  
[jevingham@upcai-fl.com](mailto:jevingham@upcai-fl.com)  
Document requests, opt-in and consent form information, meeting notice & agenda information, ballot & proxy form requests, meeting minutes, community website maintenance

### **John Fetsick**

*General Manager*  
941-355-3888 x226  
[jfetsick@universitypark-fl.com](mailto:jfetsick@universitypark-fl.com)

### **Amanda Goodhue**

*Staff Accountant*  
941-355-3888 x244  
[agoodhue@upcai-fl.com](mailto:agoodhue@upcai-fl.com)  
[ap@upcai-fl.com](mailto:ap@upcai-fl.com)  
Homeowner account questions, including assessments; vendor invoices and estoppel requests

### **Janice Kemper**

*Administrative Assistant  
to the Office Manager*  
941-355-3888 x103  
[jkemper@upcai-fl.com](mailto:jkemper@upcai-fl.com)  
RFID decal installation, community gates, dwellingLIVE, Architecture & Landscape Committee requests, new owner-tenant-realtor questions, open houses

### **Beverly Latine**

*UPCAI Controller*  
941-355-3888 x261  
[blatine@upcai-fl.com](mailto:blatine@upcai-fl.com)  
Budgets and reserves

### **Curtis Nickerson**

*Deputy General Manager  
Director of Property & Facilities*  
941-355-3888 x249  
[cnickerson@universitypark-fl.com](mailto:cnickerson@universitypark-fl.com)

### **Merry Porter**

*Office Manager*  
941-355-3888 x105  
[mporter@upcai-fl.com](mailto:mporter@upcai-fl.com)  
Architecture & Landscape Committee requests & questions, new owner & tenant orientations & questions, PBM website updates, community gates, dwellingLIVE, other general communications

### **Dava Reyes**

*Administrative Assistant,  
Landscape & Infrastructure Liaison*  
941-355-3888 x104  
[dreyes@upcai-fl.com](mailto:dreyes@upcai-fl.com)

### **Fidel Villegas**

*Infrastructure Systems Manager*  
941-355-3888 x263  
[fvillegas@upcai-fl.com](mailto:fvillegas@upcai-fl.com)  
Manholes, potable water leaks, irrigation pumps, roadways, sewer systems, sidewalks (including lighting) and all other utilities & infrastructure systems

To ensure your community-specific questions/issues are directed to the correct PBM team member, you can also use the following email addresses; please include your University Park address in the subject line:

[compliance@upcai-fl.com](mailto:compliance@upcai-fl.com)  
[decal@upcai-fl.com](mailto:decal@upcai-fl.com)  
[irrigation@upcai-fl.com](mailto:irrigation@upcai-fl.com)  
[landscape@upcai-fl.com](mailto:landscape@upcai-fl.com)  
[tenant@upcai-fl.com](mailto:tenant@upcai-fl.com)